

USED & NEW GEOPHYSICAL / GEOTECHNICAL / SURVEYING EQUIPMENT CATALOGUE

Equipment / Application

Description / condition

Price (US\$)



Used AGI SUPERSTING R1/IP (56 ACTIVE Multi-electrode cables system

US\$ 25,950
+ Shipping.

Condition

- Comes with valid Test and Calibration certification (2022) from manufacturer Advanced Geosciences AGI,
- Fully functional, good condition.
- Complete with manuals, firmware, accessories as shown
- Comes with 3 months warranty on Resistivity Meter console not including cables or connecting accessories.
- This instrument has been in use, it has visible signs of cosmetic wear/ scratches marks, typical of fieldwork equipment.

Cables: 56 Take-outs ACTIVE cables composed of 7 sections of each 8 take-outs).



**Save over \$ 14,000
in Switchbox Costs!**

**ACTIVE CABLES
NO NEED FOR SWITCHBOX**

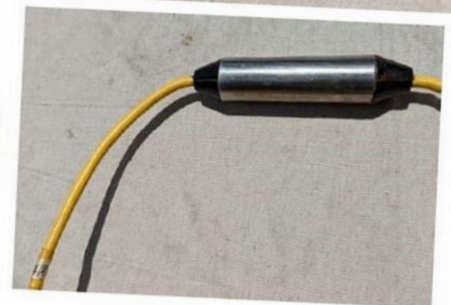
14 spread cables w/ 4 take-outs ea., 20-ft spacings (56 takeouts total, shown as 7 coils of 8 takeouts ea.)



28 take-outs
circa 2001
(#s 1-28)



28 take-outs
circa 2003
(#s 29-56)



Used IRIS SYSCAL PRO SWITCH 72 SYSTEM

(Combine Transmitter, Receiver and Switchbox in one unit). **72 take-outs multi-electrode cables system**

US\$ 27,950
+ Shipping.

Condition

- Used, Complete and fully functional
- Comes with valid Test and Calibration certification (2022) from manufacturer IRIS INSTRUMENTS,
- Complete with manuals, firmware, accessories as shown
- Comes with 3 months warranty on Resistivity Meter console not including cables or connecting accessories.
- This instrument has been in use, it has visible signs of cosmetic wear/ scratches marks, typical of fieldwork equipment.

Cables: 72 Take-outs spaced 5m, composed of X2 sections of cable, each 36 take-outs).



Investigate Deep with this 72 Electrode monster
Good Cables, 5m take-out spacing,



New MEDUSA+SKAT Electrical Resistivity Imaging/
induced polarisation IP system

Call / E-mail
for pricing
+ Shipping.

Detailed Product description and User manual
<https://www.geotools.com.au/product/2-electrical-resistivity-tomography-2-3d-ert-and-ves/>

Complete with Software
2 years warranty on hardware &
Software

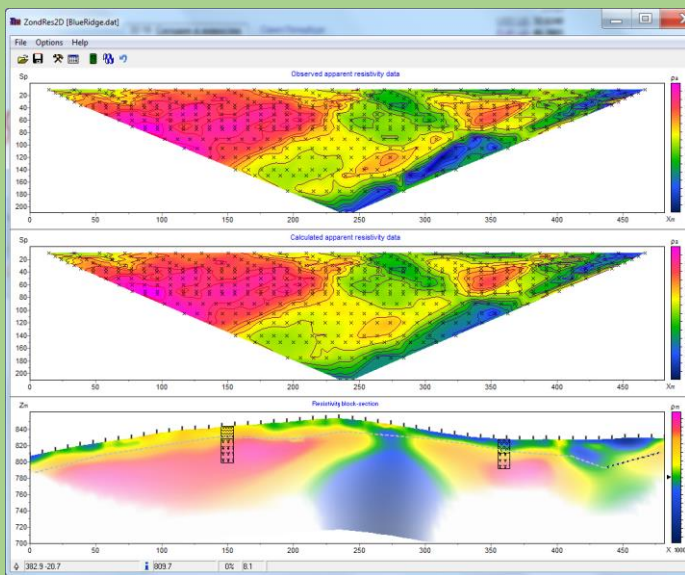
2D/3D resistivity & IP tomography

-1D Profiling and Vertical Electrical Sounding VES
Complete with Data processing Software
Specifications

Goelectrical complex that consists of the recorder SGD-EEM MEDUSA and transmitter SGD-EGC SKAT III and switchbox CommDD2 is intended for geophysical studies with the variety of techniques such as:

- Direct current methods
- Electrical resistivity tomography
- Induced polarization
- Frequency sounding
- Self potential

- 1500 V_{p-p} – 1A – 200 W transmitter
- Single-channel receiver
- 2D/3D resistivity & IP tomography
- VES, RP, SP measurements



**VES, Profiling, 2D/3D ERT and IP
Diversify your business...Escape
the Competition!**

- Geophysical prospecting
- Hydrogeological studies
- Geotechnical studies
- Environmental studies
- Archaeology



Used SYSCAL R1 PLUS Resistivity meter With manual VES
 Cables 250m (for 1D (VES/Profiling only) (Not 2D/3D ERT System))
 Condition

US\$ 8,200
 + Shipping.

- The instrument has just had annual service and comes with valid Test and Calibration certification (2022) from manufacturer IRIS INSTRUMENTS, France
- Used, Complete, fully functional
- Comes with 3 months warranty on hardware (parts and repairs) and software
- Complete with manuals and connector cables

Cables: 1D Manual single-core Cables for Vertical Electrical Sounding (VES), and resistivity profiling

- This instrument has been in use, it has visible signs of cosmetic wear/ scratches marks, typical of fieldwork equipment.

http://www.iris-instruments.com/Pdf_file/Resistivity_Sounding/summary_of_operation.pdf

Applications

- Hydrogeology/ Groundwater exploration
- Environmental Geophysical investigations
- Earthing and Grounding of domestic, power grid networks and Substations
- Geotechnical Engineering



Used ABEM TERRAMETER SAS 1000 With manual VES
 Cables 250m on reels

US\$
 + Shipping.

Condition

- Very lightly used, fully functional, good condition.
- Comes with 3 months warranty on hardware (parts and repairs) and software
- Complete with manuals and connector accessories
- Might slight signs of cosmetic wear/ scratches typical of fieldwork equipment.

Detailed product description

https://www.geotols.com/wp-content/uploads/2011/04/Terrameter-SAS-1000-leaflet_2012121.pdf



Sold (not available)





Detailed Product description and User manual

<https://www.geotools.com.au/product/1-ares-electrical-resistivity-tomography-and-ves/>

For VES, Profiling, 2D/3D ERT and IP
Bigger transmitter power 850 W, bigger current 5A, 2000Vp-p
MORE POWERFUL TRANSMITTER

2D/3D electrical Resistivity ERT and IP Tomography cables

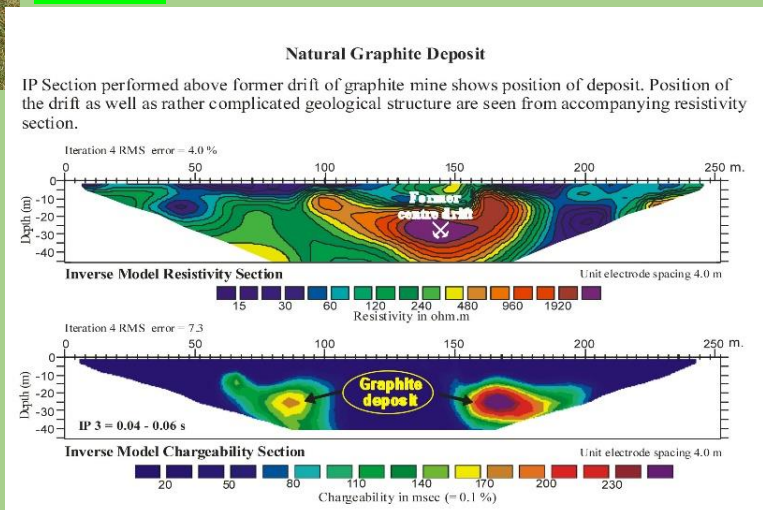
-1D Profiling and Vertical Electrical Sounding VES

Complete with Data processing Software

Specifications

- Brand new, fully functional comes with 1 year' s warranty on hardware and software
- 2000 V_{p-p} – 5 A – 850 W transmitter
- Single-channel receiver
- 2D/3D resistivity & IP tomography
- VES, RP, SP measurements
- Up to 10 adjustable IP windows

12 months warranty on hardware & Software



Used AGI SUPERSTING R1/IP (No Multi-electrode cables (With manual VES Cables 250m

US\$ + Shipping.

Condition

- Very lightly used, fully functional, good condition
- Comes with 3 months warranty on hardware (parts and repairs) and software
- Complete with manuals, power and accessories
- Might show signs of cosmetic wear/ scratches typical of

Sold (not available)



New ARES-II Electrical Resistivity Imaging/ IP system

Call / E-mail for pricing + Shipping.

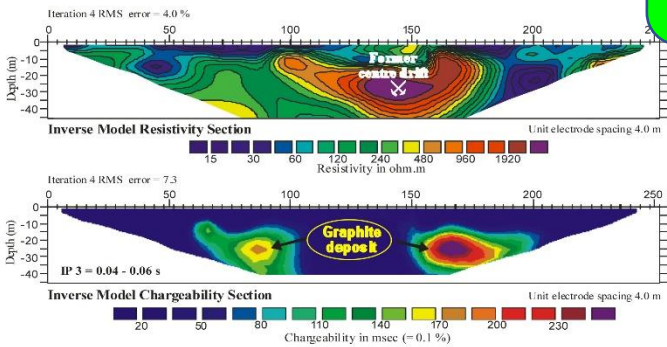
Detailed Product description and User manual

<https://www.geotools.com.au/product/1-aeris-ii-electrical-resistivity-tomography-2d-3d-and-ves/>



Natural Graphite Deposit

IP Section performed above former drift of graphite mine shows position of deposit. Position of the drift as well as rather complicated geological structure are seen from accompanying resistivity section.



**WITH BIGGER POWER...
YOU SEE DEEPER**
850 W, current 5A, 2000Vp-p
Compare the market!

- 850 W – 2000 V_{p-p} – 5 A transmitter for all multi-electrode and manual modes
- Power boosting with parallel coupling of more ARESII units
- Full power applicable for all 1D,2D and 3D multielectrode measurements
- 10-channel or single-channel receiver with up to 20 adjustable IP windows
- 2D/3D Resistivity & IP tomography
- VES, RP, SP measurements
- continuous or timed survey
- Supports 1-, 5- or 10-channel measurements using Active multi-electrode cables
- Passive cables with switch box
- Roll-along possibility
- Easy operation with graphical screen
- Data download via USB port or USB flash memory stick
- Supply from 12 V battery or AC/DC convertor
- GPS connectivity



Deep VES, 2D, 3D Tomography surveys

- Groundwater exploration (IP)
- Mineral exploration
- Geotechnical & Engineering



10(or 5) Channel Switch Box II for 48 outlets for passive cables

Applications:

- Groundwater exploration,
- geotechnical investigation,
- Monitoring of dams and dikes,
- Environmental studies and monitoring contaminant plumes
- Geological survey,
- Mineral prospecting IP
- Archaeology,
- Detecting of cavities and buried objects, underwater, marine, borehole and cross-hole measurements.



Used GEOMETRICS G-859 CESIUM VAPOUR
MAGNETOMETER
FOR MINERAL EXPLORATION, MINING, OIL &
GAS, GROUNDWATER

US\$ 11,900
+ Shipping.

Condition

- Complete, fully functional, good working condition
- WAAS/EGNOS/MSAS enabled Tallysman™ GPS.
- Comes with 3 months warranty on hardware (parts and repairs)
- Complete with manuals and connector cables
- Might have light signs of cosmetic wear/ scratches typical of fieldwork equipment.

Detailed product description

<https://www.geometrics.com/product/g-859ap/>



Used GEM GSM-9 V5.0 OVERHAUSER
MAGNETOMETER. Comes with recent Service /
Calibration report from manufacturer GEM
SYSTEMS FOR MINERAL EXPLORATION, MINING,
OIL & GAS, GROUNDWATER

US\$ 8200
+ Shipping.

Condition

- Complete, fully functional, good working condition
- 3 Batteries, Charger, Original transportation case, sensor pole, user manual, data download cables
- Comes with 3 months warranty on hardware
- Might have light signs of cosmetic wear/ scratches typical of fieldwork equipment.

Detailed product description

<https://www.gemsys.ca/rugged-overhauser-magnetometer/>



Applications

Overhauser magnetometers used in

- Engineering and Environmental Geophysical investigations
- Archaeology
- Pipeline mapping,
- UXO detection

With Service / Calibration Certificate 2021



with recent Test / Calibration certification from the manufacturer



New OMEGA-48/96M Electrical Resistivity Imaging/ IP induced polarisation system

Call / E-mail for pricing + Shipping.

Detailed Product description and User manual
<https://www.geotools.com.au/product/1-electrical-resistivity-tomography-2d-3d-and-ves-geotech/>

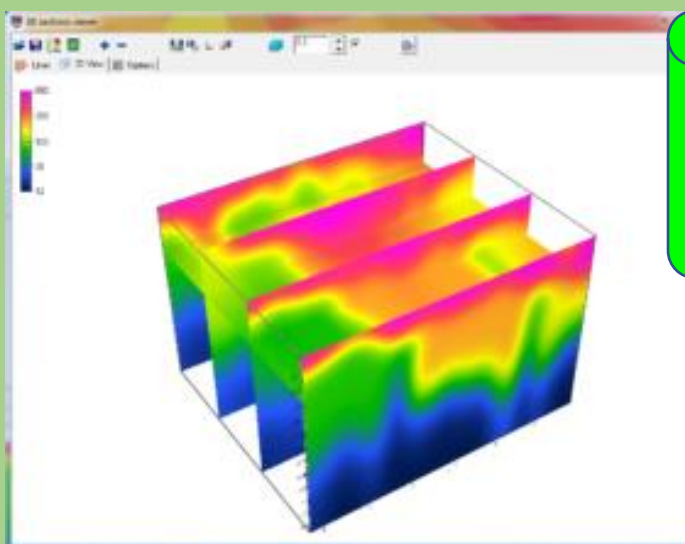
12 months Warranty on hardware and software

- 2D/3D resistivity & IP tomography
- 48, 96 Electrodes configurations
- 1D Profiling and Vertical Electrical Sounding VES

Complete with Data processing Software

Specifications

- 500 V_{p-p} – 5 A – 500 W transmitter
- Single or dual channel receiver
- 2D/3D resistivity & IP tomography
- VES, RP, SP measurements



WITH BIGGER POWER... YOU SEE DEEPER
500 W, current 5A, 500Vp-p
Compare the market!



New **DOLANG 24 Channels Telemetry SEISMIC SYSTEM (DBS280B Engineering Seismograph)**

US\$ 11,250
+ Shipping.

Made in Italy

Detailed Product description and User manual

<https://www.geotools.com.au/product/most-affordable-24-channels-seismic-engineering-refraction-masw-borehole-environmental-site-investigation/>

Specifications

Brandnew, 24-Channels 24 Bit full telemetry cable system complete with all accessories

- 4.5Hz/ 10Hz frequency geophones receiver units for typical Engineering / Environmental applications including **Refraction** and **MASW**
- No battery Required

COMPLETE SEISMIC SYSTEM READY TO WORK

2 years warranty on hardware & Software



SEISMIC

Cover **BIGGER AREAS, FASTER**
acquire **DEEPER DATA** with **48/60 Channels** (better than 24 channels)

Used 60 Channel GEOMETRICS STRATAVIEW SEISMOGRAPH complete with accessories, geophones

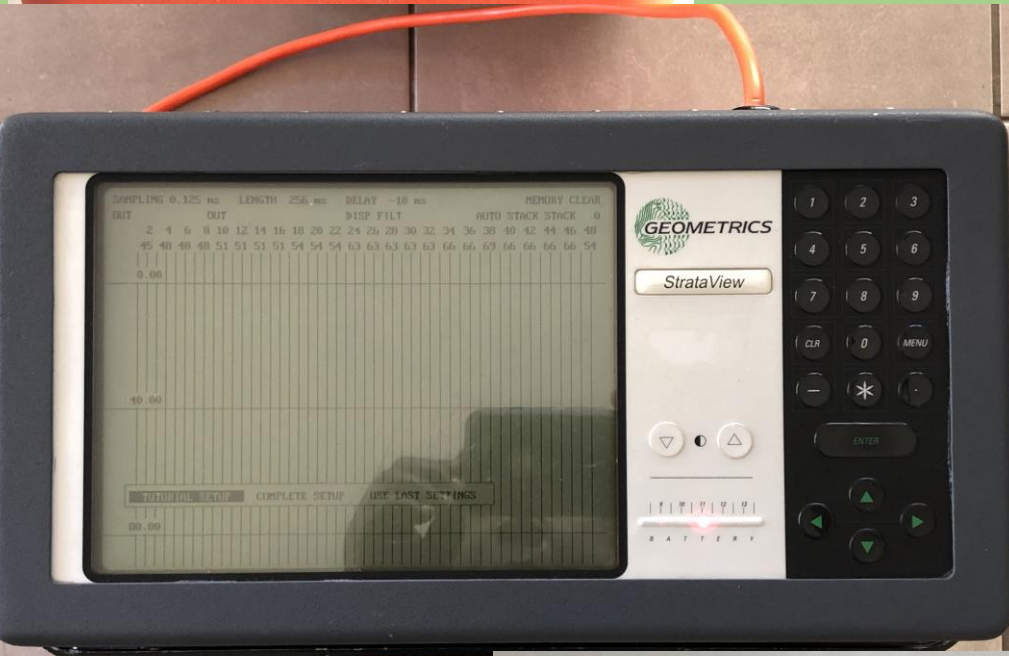
US\$ 22,800
+ Shipping.

Product inspection:

<https://youtu.be/OQTKSsaqgA>

Condition and Specifications

- Used, fully functional, complete with 60 channels 10Hz Geophones and accessories.
- Suitable for REFLECTION, REFRACTION, MASW VSP, surveys and 3C downhole or land geophones
- Automatic Refraction data processing, First-break picking, velocity analysis and generating velocity sections / lithological sections in the field.
- Can be used for 24, 48 or any set of channels as it allows temporal deactivation of unused channels.



- Can be used with 24, 48 or any number of Geophones 1-60 by deactivating unused channels.
- Provides Automated Refraction data processing, First-Breaks picking, generating velocity / lithology sections in the field
- Applicable to REFLECTION, REFRACTION, MASW, VSP and 3C Downhole / Land Geophones





New DAQLINK-3 24 Channel Seismograph

(Complete with Geophones, Geophone cables, power accessories, strike plate) Cables Used

US\$ 13,900
+ Shipping.

Condition

- Brand-new Seismograph, brand-new Geophones, new trigger cable and ethernet cables, used Geophone connector cable.
- Dual purpose choice of Geophone frequency 4.5Hz to do both seismic refraction and MASW jobs
- Comes with a valid Calibration certificate and 3 months warranty covering parts and repairs.
- Software can be supplied for additional cost (cost not included in price above)



Used GEOMETRICS ES-3000 12 Channels Seismograph (Console only)

US\$ 6,900
+ Shipping.

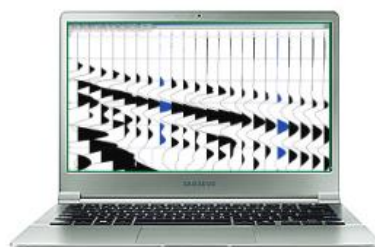
https://www.geometrics.com/wp-content/uploads/2018/10/ES-3000_Spec_Sheet.pdf

Description and Condition

- This listing and price is for Seismograph console only.
- Seismograph in good working condition, fully functional and in good cosmetic appearance.
- This unit appears very lightly used and well-looked after.

Under a separate arrangement (at a cost), we can help in sourcing all other accessories (Geophones, Cables, Power accessories, Shot trigger and trigger extension

ES-3000
Lightweight Seismic Imaging System



**Upgradeable to 24 channels.
Good brand Geometrics**



Used SUMMIT X-ONE DATA COLLECTOR

24 Channels Seismograph (Console only)

US\$ 15,850
+ Shipping.

<https://www.dmt-group.com/products/geo-measuring-systems/summit-x-one.html>

For system set-up refer to link below:

<https://youtu.be/hnitEDjoQDQ>

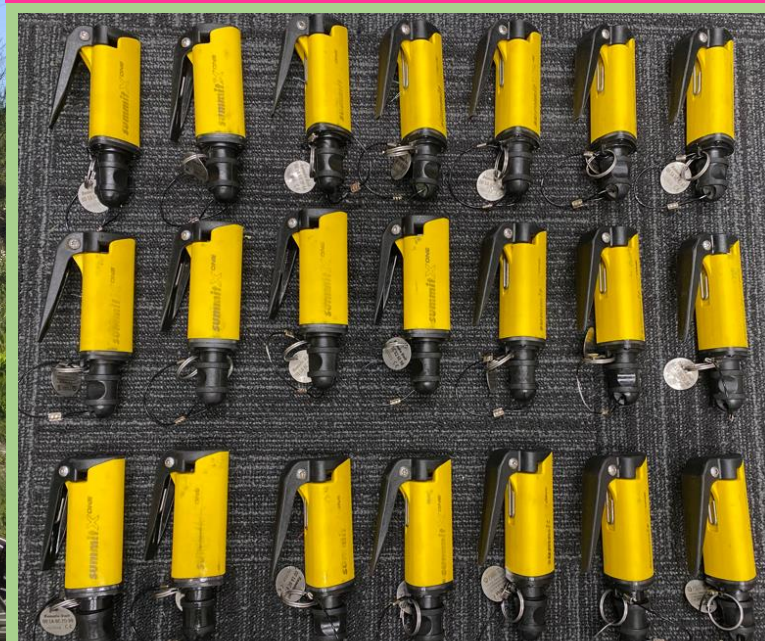
<https://youtu.be/u9XuYMLM6Ws>

Description and Condition

- System purchased in 2019, lightly used on few (5) small projects, well-looked after
- Complete and fully functional
- Firmware upgraded 2021
- x21 Summit X one RUs (good condition).
- 300m Summit X One Geophone leader cable
- 2 brand new Ru's replaced,
- 5 RU's need repair (connection pins broken).

**Fast Data acquisition,
Unrestricted Geophone
Spacing. Lightweight**

**RU's enable flexible
geophone spacing**





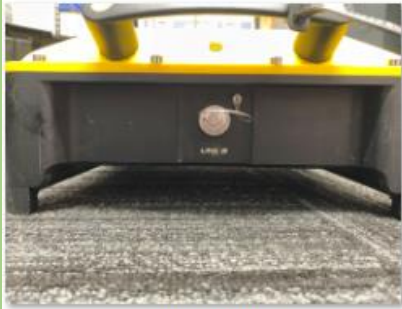
IMG_1183.JPG



IMG_1185.JPG



IMG_1187.JPG



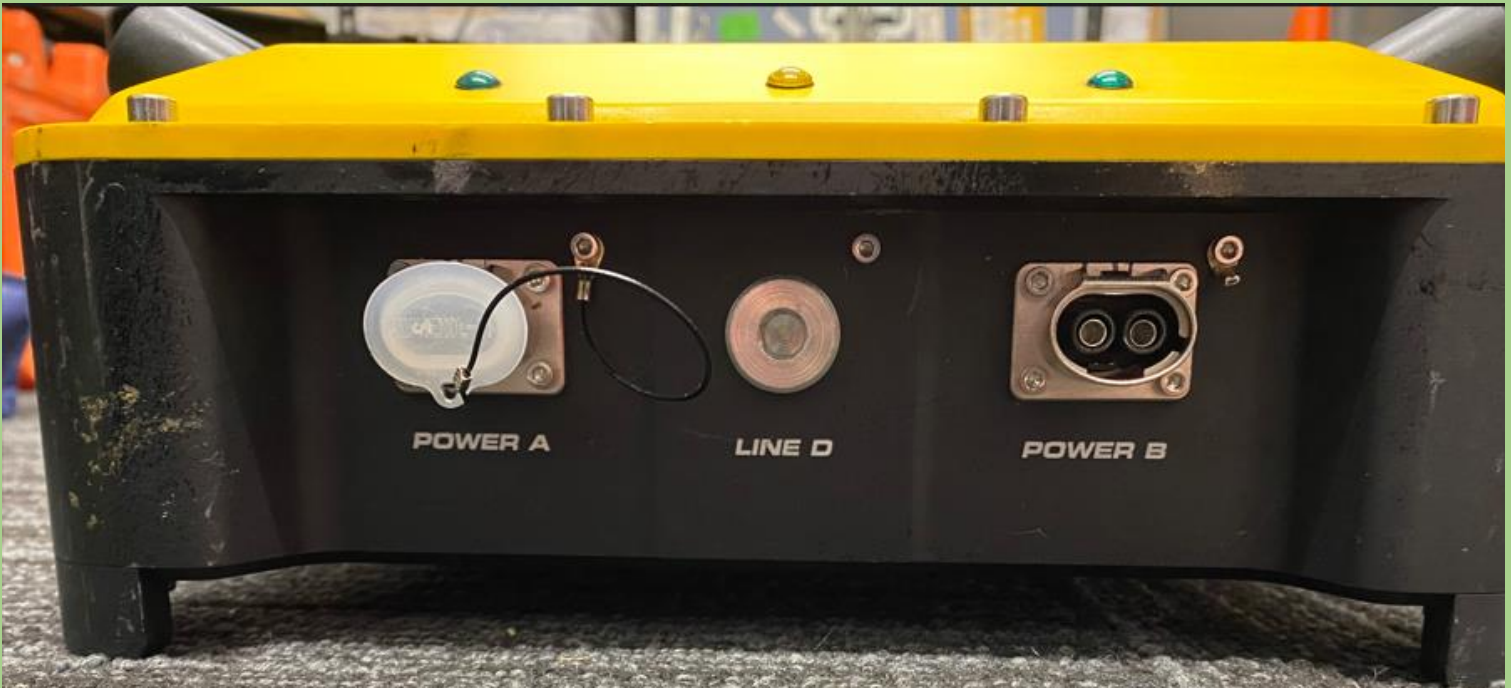
IMG_1188.JPG



IMG_1190.JPG



IMG_1191.JPG



Still moving geophones/cables forward, working as slow as "Roll-along"?

ACQUIRE 48,96,120 CHANNELS IN ONE GO WITH YOUR 24-CHANNEL SEISMOGRAPH.

Cover Big Areas fast, increase production-rate, reduce fatigue, and stop wasting time!

Ditch the old-school manual "roll-along" and

USE A ROLL-ALONG SWITCHBOX

(Work Smart-not-hard)

US\$ 6,850
+ Shipping.

Used GEOSTUFF ROLL-ALONG 24
Channels Switchbox

Condition

- Used, Fully functional
- Model RS-96/24 has inputs for up to 96 geophones and outputs for a 12 or 24-channel seismograph.

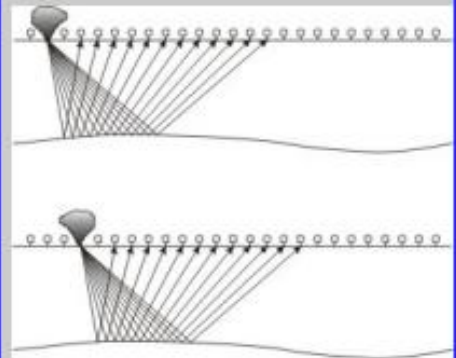
Roll-along switches are designed to automate the process of collecting continuous reflection surveys efficiently. In practice, more geophones are laid on the ground than channels available on the seismograph. The Roll-along Switch selects a subset of the available geophones for each shot point. The active geophones are moved along the ground electrically instead of physically each time the shot point is moved.





What is a rollalong switch?

Reflection surveys are conducted by moving the energy source and geophones a short distance along the ground, firing shots, and collecting overlapping sets of data. The process continues linearly until the area of interest is covered.



This laborious procedure is made efficient by placing a larger number of geophones on the ground connected through a rollalong switch to the seismograph. The switch electrically

- For seismic surveys: shallow reflection, refraction, and MASW
- Systems for 24 or 48-channel

What's more costly: Geophones or Human Time and Effort? (Work Smart-not-hard)





New GEOSTUFF BHG-2 3-COMPONENT
BOREHOLE GEOPHONE SEISMIC SYSTEM

US\$ 7,900
+ Shipping.

(Composed of: 3C Geophone, Geophone controller,
Borehole cable and connector cable to Seismograph)

<https://www.geostuff.com/BHG.html>

GEOSTUFF wall-lock borehole geophones (Model BHG-2)

BHG-2 contains a 3-component geophone in an X-Y-Z orientation.

- Standard geophone elements are high-output, 15 Hz natural frequency that can operate with the tool vertical or horizontal. Elements are also available with 10, 14, 28 or 40 Hz natural frequencies.
- The outside diameter is 1.85 inches (47 mm), small enough to fit inside a schedule-40, 2-inch plastic pipe.
- Clamping mechanism is a robust, steel spring compressed by a DC electric motor.
- No rubber bladders to break or tubes to leak, and operation is relatively independent of depth. BHG-2 models have been used to depths of 500 meters.

BHGC-1: CONTROLLER

This control unit switches power to the clamp mechanism and compass and directs the geophones signal to your standard seismograph.





**New GEODEVICE 24 Channels
HYDROPHONE WELL STREAMER**

Call / E-mail
for pricing
+ Shipping.

Detailed Product description and User manual

<https://www.geotools.com.au/product/5-borehole-seismic-hydrophone-arrays-vertical-seismic-profiling-vsp-and-crosshole/>

Specifications

WellStreamer is a borehole hydrophone array, specially developed for seismic acquisitions in the water-filled wells.

Designed exceptionally easy to use and robust receiver array with high sensitive piezoceramic sensors for registering compressional (P) waves during VSP and cross hole surveys.



The standard diameters of the containers are 36 / 60 / 80 mm, thus allowing operations in wells with diameters starting from 40 mm.

The set includes:

- Pulse source
- Power cable
- Reel with high-voltage slip ring
- Wire to connect a reel and an energy source

Borehole Sparker Pulse

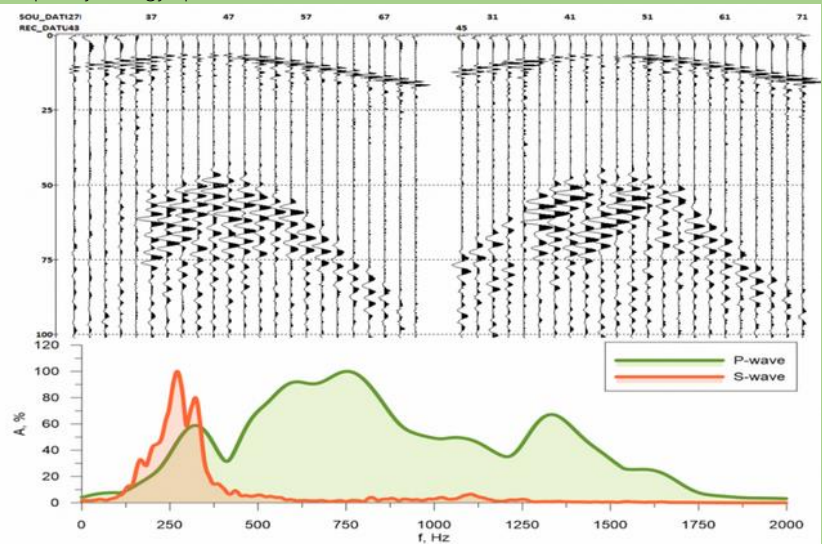
<https://geodevice.co/main/seismic/sources/sparker/p-s-bh/>
Main features:

Call / E-mail
for pricing
+ Shipping.

- Easily replaceable electrode group
- Can be used in wells with diameters starting from 40 mm
- Reel with high-voltage slip ring

Pulse is a borehole sparker, developed for generating compressional P-wave energy in water-filled wells. This type of source is typically used for crosshole seismic testing (CST) and vertical seismic profiling (VSP) acquisitions. In combination with [Jack energy source](#) it provides stable signal shape with high frequency energy spectrum.

Borehole sparker Pulse





**2 years Warranty speaks
volumes on quality of
equipment**

New LOKALIT-MT Distributed Seismic System
(several 6 channel telemetry units can be linked
up to 1024 Channels in total) **...expandable to
1024 Channels**

Detailed Product description and User manual

<https://www.youtube.com/watch?v=7Sc-d4Ddmwk&t=2s>

<http://geotechru.com/multichannel-seismograph-lakkolit-mt/>

Specifications

Each telemetry unit includes a six-channel registration unit and a six-channel seismic cable with geophones.

Using the Lakolit-MT, a specialist can create and build a surveying system, including 3D data collection.

A laptop/control unit is used to control the seismographs.

Call / Email
for pricing
+ Shipping.

SEISMIC SYSTEMS



New DOLANG WIRELESS SEISMOGRAPH 24 Channels.....expandable to 256 Channels

Call / E-mail for pricing

+ Shipping.

Detailed Product description and User manual
<https://www.geotools.com.au/product/wireless-seismograph-for-refraction-masw-engineering-and-environmental/>

<https://www.youtube.com/watch?v=9oZ3dF2EPmc&t=6s>

Specifications

- Brand new, currently 24 channels but can be expanded to 256 channels over time.
- 4.5Hz frequency geophones receiver units for typical Engineering / Environmental applications including Refraction and MASW

Think BIG, from the start

Grow! Don't get stuck in Small Jobs!

Expandable to 256 channels max





New DOLANG 24 Channels Telemetry SEISMIC SYSTEM (JEA247E500)

US\$ 16,810
+ Shipping.

expandable to 240 or 1000 Channels

Detailed Product description and User manual

<https://www.geotools.com.au/product/4b-dolang-telemetry-cable-connected-seismic-systems-up-to-1000-channels/>

[http://www.dolang-](http://www.dolang-geophysical.com/1/upload/jea247esac_manual_eng.pdf)

[geophysical.com/1/upload/jea247esac_manual_eng.pdf](http://www.dolang-geophysical.com/1/upload/jea247esac_manual_eng.pdf)

Specifications

Brand new, full telemetry system currently 24 channels but can be expanded to 256 or 1000 channels over time.

- 4.5Hz/ 10Hz frequency geophones receiver units for typical Engineering / Environmental applications including Refraction and MASW

Think BIG, from the start

**Grow! Don't get stuck in Small Jobs!
Start with 24 channels....expand to 240 or 1000 channels**



SEISMIC QUALITY CONTROL

Geophone and Hydrophone Tester

Used SeismicSource™ BIRD DOG-3 GEOPHONE AND HYDROPHONE TESTER

Complete with all accessories + 3-COMPONENT
(3C) RECORDER

Product description and manual:

<http://seismicsource.com/html/products/quality-control/birddog3-3>

Condition and Specifications

32-Bit system is used for quality control in the seismic data acquisition industry to:

Testing FUNCTIONALITY and Calibration of:

- Land Geophones (single) and Geophone streamers including 3C geophones
- Borehole geophone streamers and 3C Components.
- Hydrophones and streamers both marine, borehole
- This 3 Channel recorder included can be used as 3C seismic recording system.

BIRD DOG-3
Complete with
accessories
Geophone &
Hydrophone
tester and
software

US\$ 4,400
+ Shipping.

3C Seismic
Recorder only:
US\$ 1,150
+ Shipping.

GPS Only:
US\$ 480
+ Shipping.



SEISMIC QUALITY CONTROL

Geophone and Hydrophone Tester

Used Accessories to **Seismic Source BIRD DOG-3 GEOPHONE AND HYDROPHONE TESTER**

Product inspection:

<http://seismicsource.com/html/products/quality-control/birddog3-3>

Condition and Specifications

This is a continuation of listing above.

Presents accessories available and useable with the Bird Dog-3 Seismic Source Geophone and Hydrophone testing system.

Accessories

- **HYDROPHONE TEST TUBE:** Check functionality and calibration of Hydrophones and streamers both marine, borehole
- **3-COMPONENT SEISMIC RECORDER:** can be used as 3C seismic recording system.
- **GPS RECEIVER:** can be used to Seismic source DAQLINK Products and with BIRDDOG-3.
- **SOFTWARE** for operating BIRDDOG-3.

BIRD DOG-3
Complete with
accessories
Geophone &
Hydrophone
tester and
software

US\$ 4,400
+ Shipping.

3C Seismic
Recorder only:
US\$ 1,150
+ Shipping.

GPS Only:
US\$ 480





New LOKALIT-MT Distributed Seismic System
 (several 6 channel telemetry units can be linked
 up to 1024 Channels in total) **...expandable to
 1024 Channels**

Call / Email
 for pricing
 + Shipping.

Detailed Product description and User manual

<https://www.youtube.com/watch?v=7Sc-d4Ddmwk&t=2s>

<http://geotechru.com/multichannel-seismograph-lakkolit-mt/>

Specifications

Each telemetry unit includes a six-channel registration unit and a six-channel seismic cable with geophones. Using the Lakolit-MT, a specialist can create and build a surveying system, including 3D data collection. A laptop/control unit is used to control the seismographs.

**2 year Guarantee speaks volumes on
 quality of equipment**

VERTICAL SEISMIC PROFILING (VSP)

3-Component downhole geophone

<https://geodevice.co/main/seismic/station/telssvsp/>

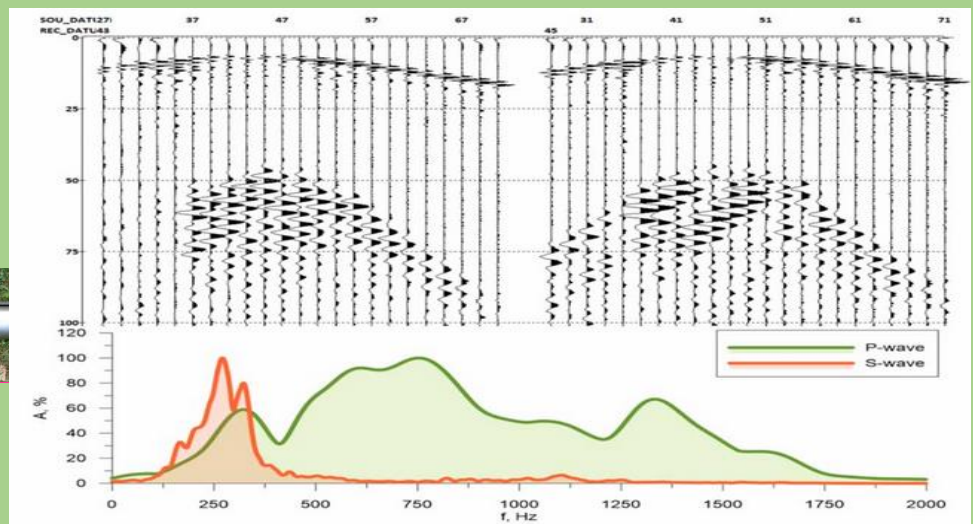
Call / E-mail
 for pricing
 + Shipping.

New GEODEVICE VSP TELEMETRY DOWNHOLE SEISMIC SYSTEM

TELSS-VSP telemetry borehole seismic acquisition system is designed for VSP, polarization VSP, uphole and crosshole surveying.

The mobility of the system allows the use of it in boreholes as deep as 100 meters (and even more).

The presence of 3-component sensor and anchoring arm allows to register full wavefield, including primary, secondary, and other waves.



Concrete Scanning GPR (Damage minimisation/ Structural Defect Assessments)

**Used MALA CX11 CONCRETE SCANNING
Ground Penetrating Radar (GPR)**

US\$ 8,200
+ Shipping.

Condition

- Used, Fully functional, accurate and consistent data.
 - Do 2d/ 3d structural defect assessment surveys
 - Complete with software
 - Signs of cosmetic wear / scratches typical of fieldwork equipment.
- Choice of two antennas 1.6GHz or 2.3GHz.

**US\$ 2850 for
second 2.3GHz
antenna.**



**Need to Scan
DEEP FOOTINGS?**



www.sigeoconcrete.com.au

**Used MALA CX12 CONCRETE SCANNING
Ground Penetrating Radar (GPR)**

US\$ 9,600
+ Shipping.



Condition

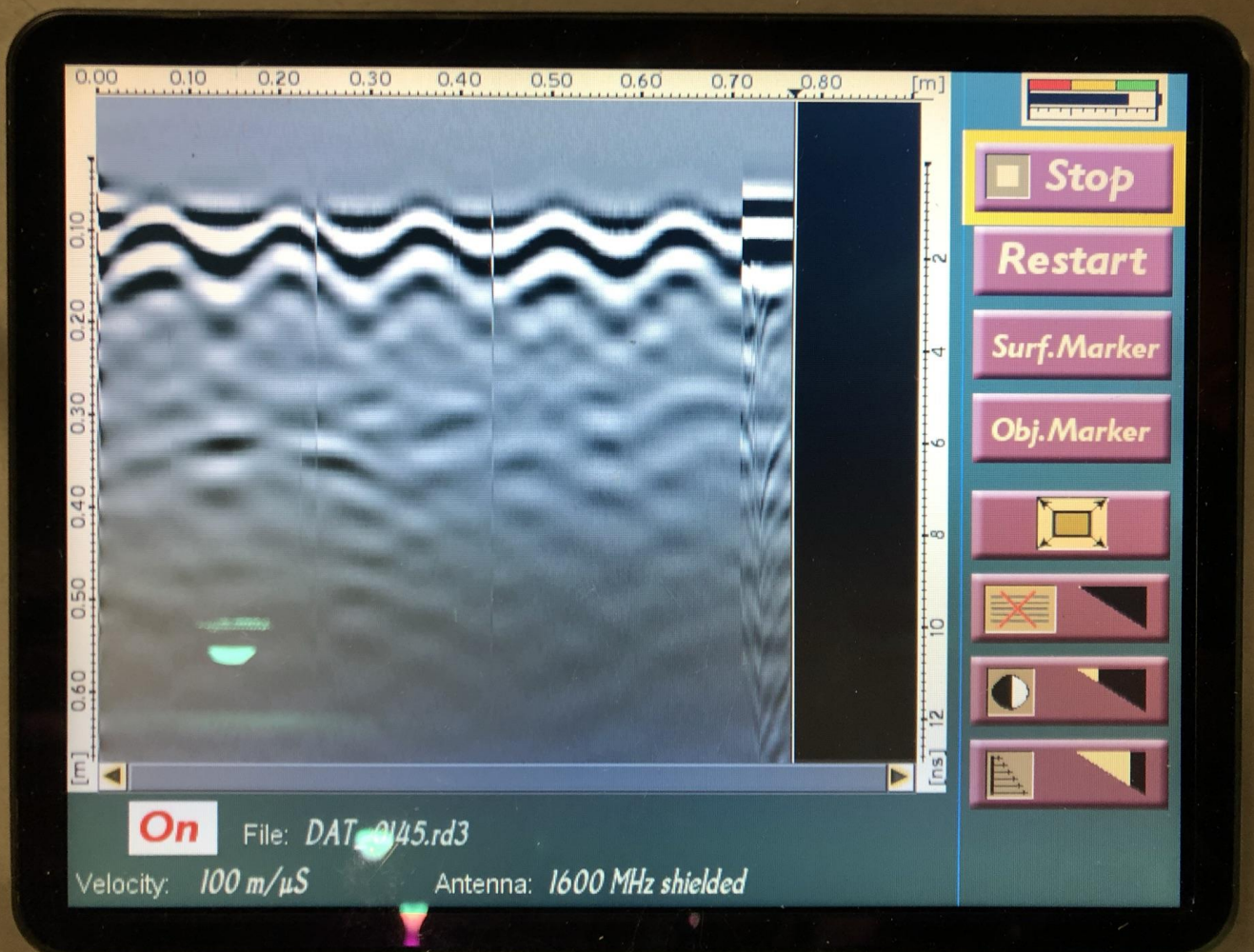
- Used, Complete and fully functional.
- Do 2d/ 3d structural defect assessment surveys
- Complete with software
- Signs of cosmetic wear / scratches typical of fieldwork equipment.

US\$ 2850 for second 2.3GHz antenna.

- Choice of two antennas 1.6GHz or 2.3GHz.



Want the cleanest data? Mala GPR is Beautiful! If you set it right.



Antenna frequency (GHz)	Approximate Radial Resolution @ c-100	Approximate max penetration depth (cm)
-------------------------	---------------------------------------	--

**Used GSSI STRUCTURAL MINI XT
CONCRETE SCANNING Ground Penetrating
Radar (GPR)**

US\$ 15,200
+ Shipping.

Condition

- Used, Complete and fully functional.
 - Do 2d/ 3d structural defect assessment surveys
 - With Palm antenna to allow access into tight spaces
 - Signs of cosmetic wear / scratches typical of fieldwork equipment.
- LineTrac not included



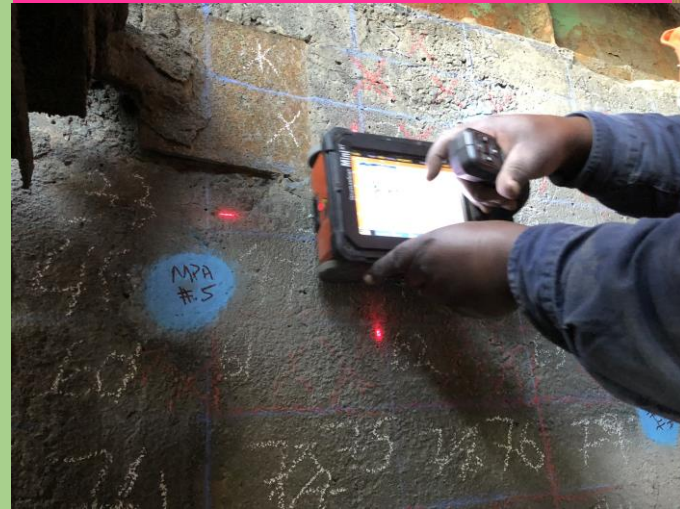
With Palm Antenna

LineTrac not included

**Make More \$\$ Scanning
Concrete Structures**

Endless applications

- Concrete Slabs and Structures
- Beams, Columns, Footings
- Bridge-deck inspection and Assessments
- Pre-cast Concrete QA/QC,
- As-Built Structural Assessments
- Locating Slab-embedded Utility Services





**Used GSSI STRUCTURAL MINI XT
CONCRETE SCANNING Ground Penetrating
Radar (GPR)**

US\$ 13,800
+ Shipping.

Condition

- Used, Complete and fully functional.
- Do 2d/ 3d structural defect assessment surveys
- 3 batteries, Charger and original GSSI transport case
- Signs of cosmetic wear / scratches typical of fieldwork equipment.
- Nor LineTrac, no Palm antenna included



No Palm Antenna no linetrac



**Make More \$\$ Scanning
Concrete Structures**

Endless applications

- Concrete Slabs and Structures
- Beams, Columns, Footings
- Bridge-deck inspection and Assessments
- Pre-cast Concrete QA/QC,
- As-Built Structural Assessments
- Locating Slab-embedded Utility Services



New CONSTRUCTION SCAN 2500 / 1700 2D/3D
GROUND PENETRATING RADAR (GPR)
(Complete)

Call / E-mail
For pricing
+ Shipping.

Detailed inspection

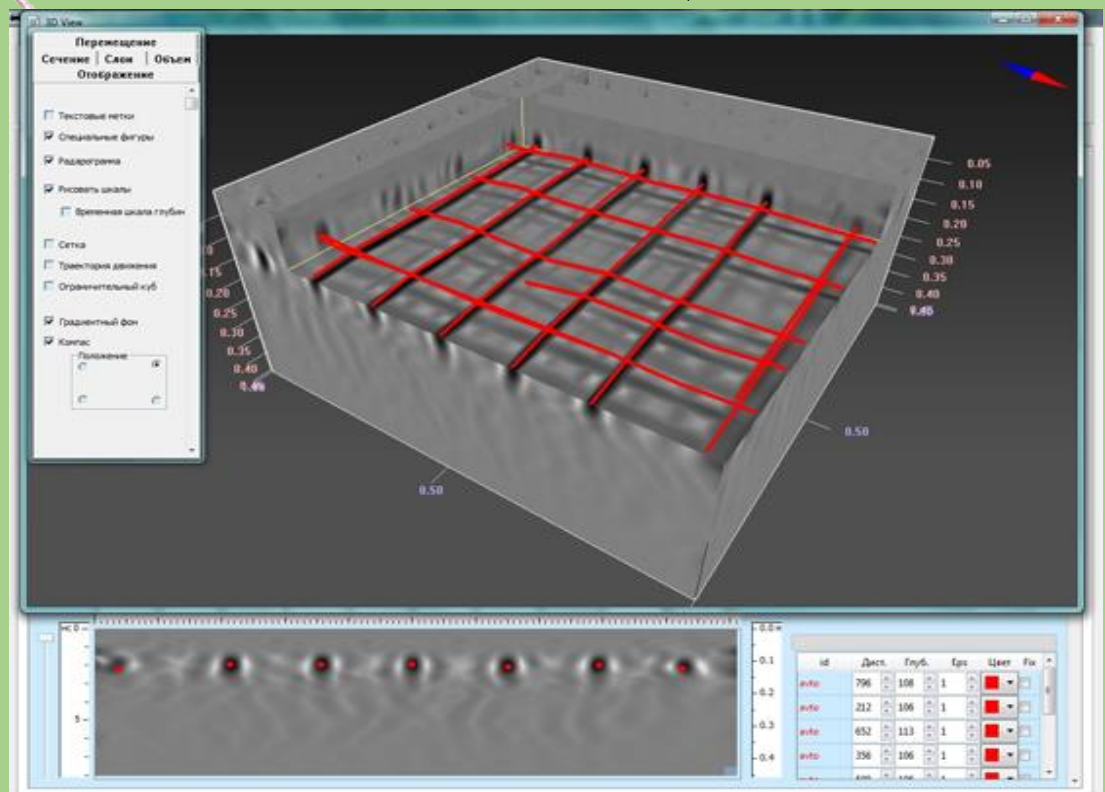
[Construction Scan 1700 3D - YouTube](#)

<https://www.geotools.com.au/product/4a-concrete-structural-scanning-ground-penetrating-radar-gpr/>
<https://www.youtube.com/watch?v=HbAQptFoVnc>

Construction Scan 2500 is a portable all-in one GPR solution designed for automated localizing defects in a wide variety of wood, brick and reinforcement concrete structures, at depth of 0,6 m.

Application

- Detection and location of different defects in reinforced concrete
- Cells, cavities
- Foreign inclusions
- Cracks, layering
- Determination of reinforcement specifications
- Size and Depth
- Degree of corrosion
- Detection of buried wiring, cables and communications lines
- Detection of plastic and metal pipelines
- Detection of heterogeneities, anomalies and other buried in solid environment (which wood, brick, reinforced concrete, building constructions, soil, etc)
- Discovering of ventilation and communication channels
- Detection of shelters and covered-up holes





Used GSSI GROUND PENETRATING RADARS (GPR)
(Complete SIR3000 Controller+ 400MHz Antenna+ 2-wheel cart

US\$ 12,400
+ Shipping.

Condition

- Used, Fully functional, accurate and consistent data.
- 2 new Batteries and 2 batteries at 75% efficiency
- 3 months warranty covering parts and repairs
- slight signs of cosmetic wear typical of fieldwork equipment.

Detailed inspection

<https://www.geotools.com.au/product/gssi-ground-penetrating-radar-gpr/>



Used GSSI GROUND PENETRATING RADARS (GPR)
(Complete SIR3000 Controller+ 270MHz Antenna+ 4wheel cart

US\$ 12,700
+ Shipping.

Condition

- Used, Fully functional, accurate and consistent data.
- 1 new Batteries and 2 batteries at 80% efficiency
- 3 months warranty covering parts and repairs
- slight signs of cosmetic wear typical of fieldwork equipment.

Detailed inspection

<https://www.geotools.com.au/product/gssi-ground-penetrating-radar-gpr/>





Used GSSI 100MHz Frequency GPR ANTENNA (Very good condition)

US\$ 7,800
+ Shipping.

Condition

- Lightly Used, fully functional, very good condition data
- Do deeper investigations for Engineering, Environmental, Geotechnical and Archaeology.
- Signs of cosmetic wear / scratches typical of fieldwork equipment.



SEE DEEPER (2-15 m (5-50 ft))

With Low Frequency 100MHz

The 100 MHz monostatic combines the transmit and receive electronics in a single antenna housing.



Used GSSI 300MHz Frequency GPR ANTENNA (good condition)

US\$ 2,900
+ Shipping.

Condition

- Lightly Used, fully functional, very good condition data
- Do deeper investigations for Engineering, Environmental, Geotechnical and Archaeology.
- Signs of cosmetic wear / scratches typical of fieldwork equipment.

LOCATE DEEPER Than the 400MHz Frequency. 300MHz is the rare, sweet spot (not too high, not too low)



Used GSSI 270 MHz – GPR Shielded Antenna (good condition) (only Antenna nothing else)

US\$ 4,100
+ Shipping.

270 MHz – Shielded Antenna

The 270 MHz antenna is ideally suited for detection and mapping of utility pipes, shallow engineering, environmental applications, and karst investigations. Depth Range: 0-6 m (0-18 ft)





Condition

- Lightly Used, fully functional, very good condition data
- Do deeper investigations for Engineering, Environmental, Geotechnical and Archaeology.
- Signs of cosmetic wear / scratches typical of fieldwork equipment.



LOCATE DEEPER Depth Range: 0-6 m (0-18 ft) Than the 400MHz and 270MHz is the rare sweet spot (not too high, not too low)



Used SENSORS & SOFTWARE LMX100 GROUND PENETRATING RADARS (GPR) Complete with 250MHz Antenna and 4-wheel cart

US\$ 10,950 + Shipping.

Condition

- Used, Fully functional, accurate and consistent data.
- 1 new Battery and 2 batteries at 80% efficiency
- 3 months warranty covering parts and repairs
- slight signs of cosmetic wear typical of fieldwork equipment.

Sold (not available)



Used MALA EASY LOCATOR GROUND PENETRATING RADARS (GPR) Complete with 500MHz Antenna and 4-wheel cart

US\$ 7,900 + Shipping.

Condition

- Used, Fully functional, accurate and consistent data.
- 1 new Battery and 2 batteries at 80% efficiency
- 3 months warranty covering parts and repairs
- slight signs of cosmetic wear typical of fieldwork equipment.





Used MALA RAMAG X3M Ground Penetrating Radar with 250Mhz antenna

US\$ 9,800
+ Shipping.

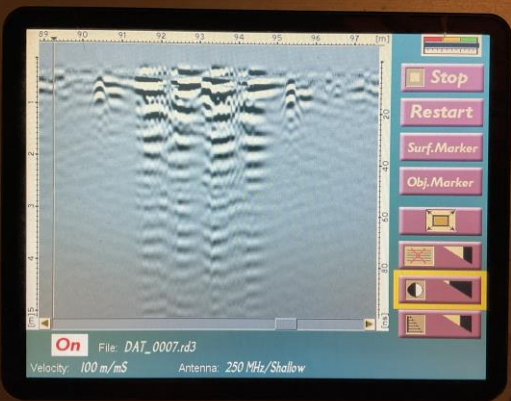
**Serves all your locating needs
- 250MHz antenna for deep jobs**

Items include

- 21-002492 X3M Ethernet version
- 21-004004A Li-Ion Battery pack 12V
- 21-003006A Battery bag Li-Ion
- 21-002648 Li-Ion Battery Charger 12.6V H01110030 incl EU/UK/
- 21-002486 X3M power cable 4m spiralized
- 21-002488 Ethernet cable 1.8m black
- 19-001050 MALÅ USB Software and Manuals Package
- 21-003300 Monitor
- XV11
- 21-002648 Li-Ion Battery Charger 12.6V H01110030 incl EU/UK/
- 21-002485 Monitor power cable, 1.2m straight
- 21-002500 Rough Terrain Cart (RTC) for 250-800MHz

FULLY FUNCTIONAL & READY FOR WORK

Complete with RAMAC Software & New Batteries



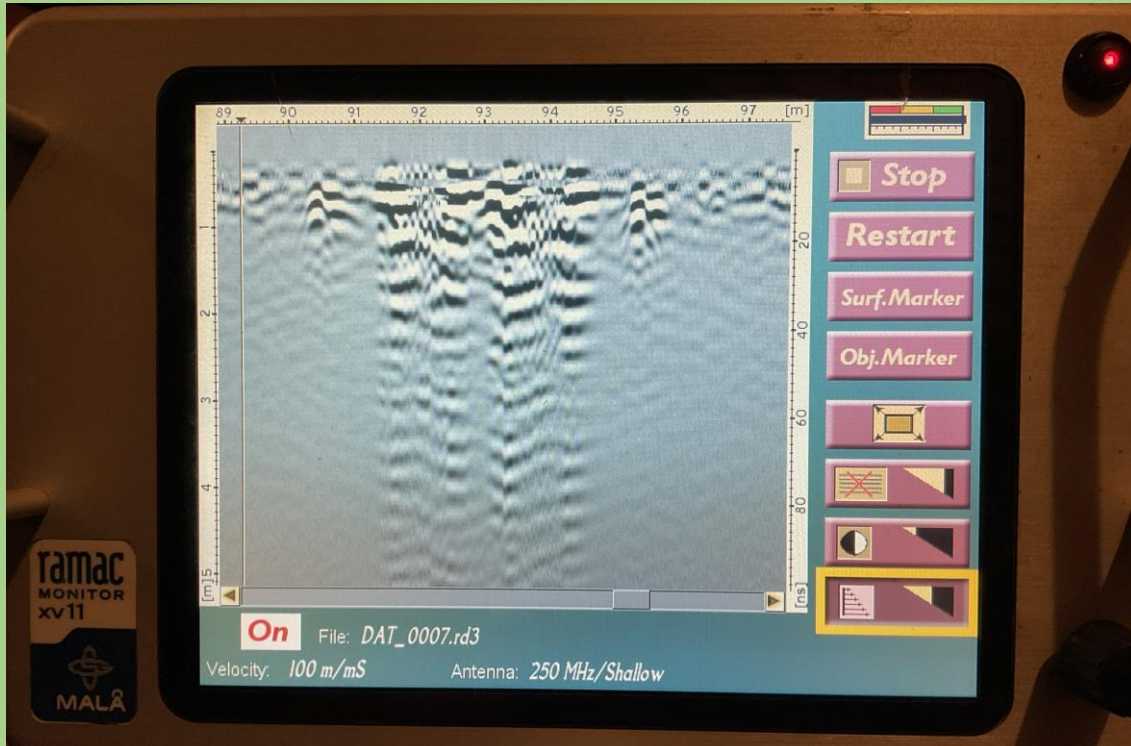
What's your GPR flavour?

What Frequency (MHz) would you like?

How Deep are your investigations?

Are you Struggling with GPR Settings?

Mala GPR is good! If you set it right.



What's your GPR flavour?

What Frequency (MHz) would you like?

How Deep are your investigations?

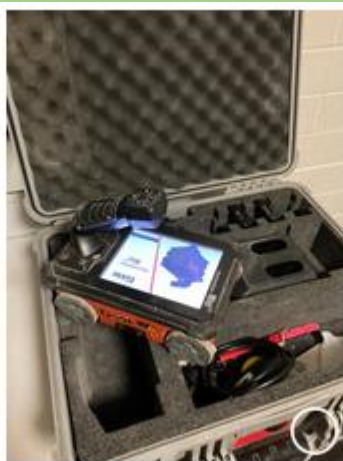
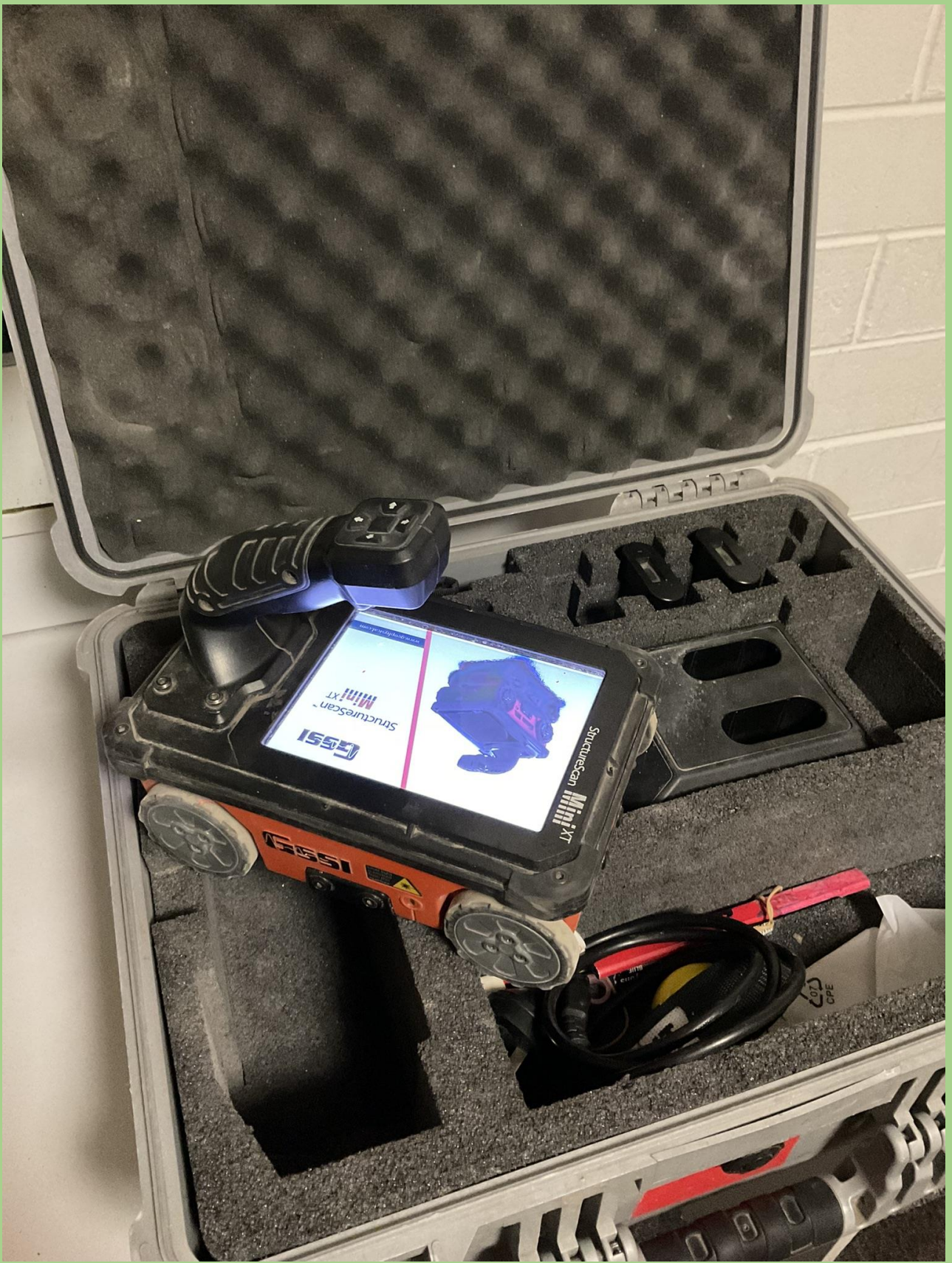


Or you prefer GSSI?

What Frequency (MHz) would you like?

How Deep are your investigations? , What application?







Used MALA RAMAG X3M Ground Penetrating Radar with 250Mhz antenna

US\$ 9,800
+ Shipping.

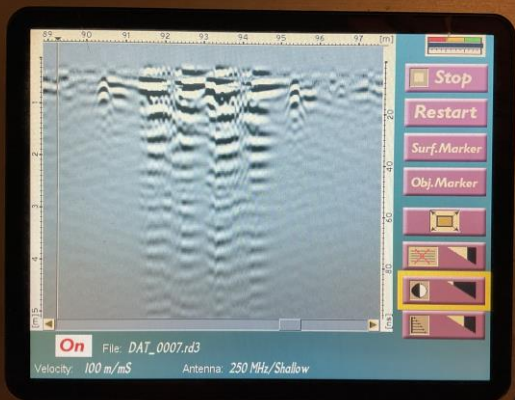
**Serves all your locating needs
- 250MHz antenna for deep jobs**

Items include

- 21-002492 X3M Ethernet version
- 21-004004A Li-Ion Battery pack 12V
- 21-003006A Battery bag Li-Ion
- 21-002648 Li-Ion Battery Charger 12.6V H01110030 incl EU/UK/
- 21-002486 X3M power cable 4m spiralized
- 21-002488 Ethernet cable 1.8m black
- 19-001050 MALÅ USB Software and Manuals Package
- 21-003300 Monitor
- XV11
- 21-002648 Li-Ion Battery Charger 12.6V H01110030 incl EU/UK/
- 21-002485 Monitor power cable, 1.2m straight
- 21-002500 Rough Terrain Cart (RTC) for 250-800MHz

FULLY FUNCTIONAL & READY FOR WORK

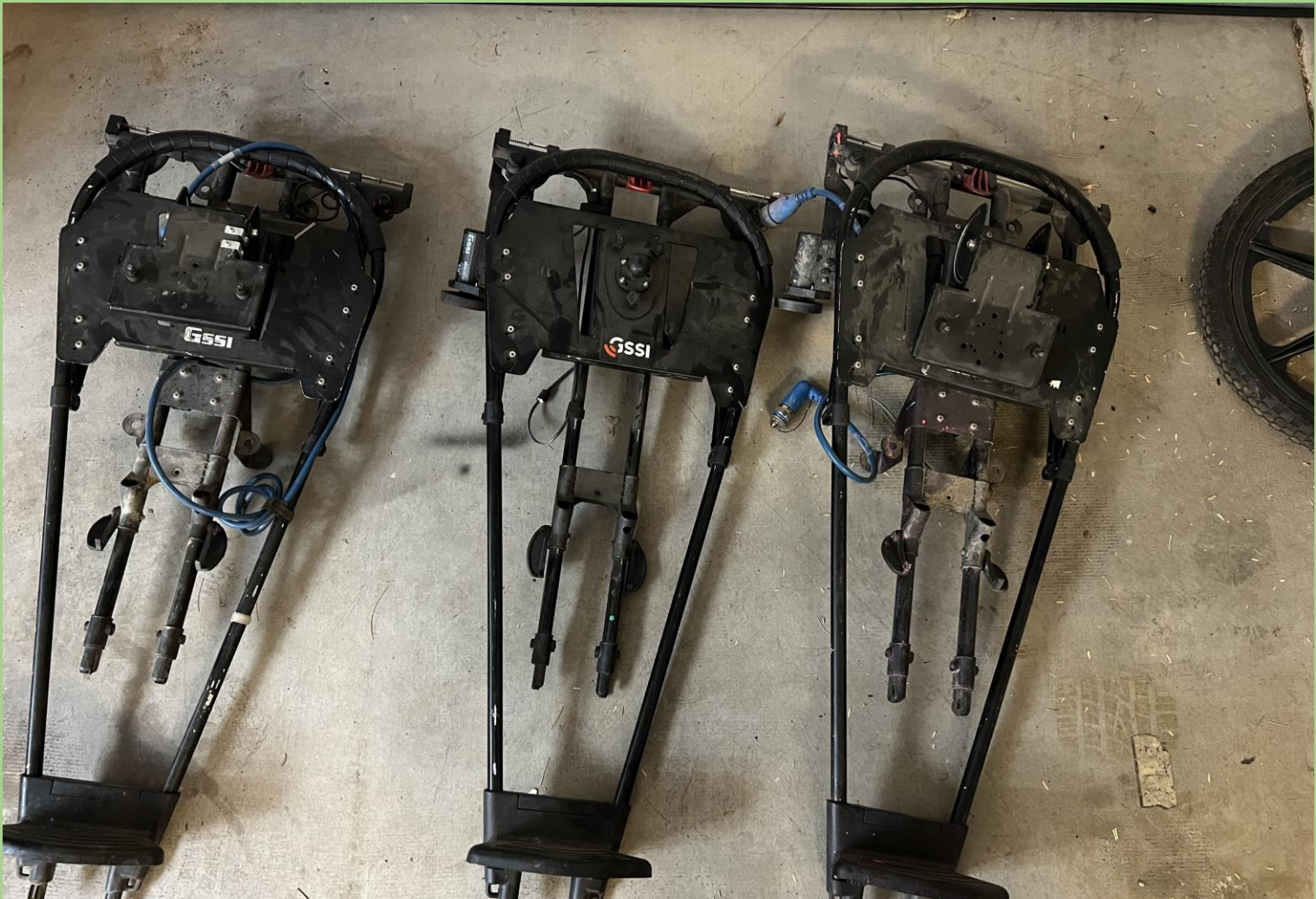
Complete with RAMAC Software & New Batteries



What's your GPR flavour?

What Frequency (MHz) would you like?

How Deep are your investigations?







Low Frequency GPR to investigate Deeper?

Frequencies 100MHz, 50 MHz, 25 MHz), Archaeology, Engineering, Environmental, Sinkhole, Ground Subsidence, Shallow Bedrock Profiling etc)





Low Frequency GPR to investigate Deeper?

Frequencies 100MHz, 50 MHz, 25 MHz), Archaeology, Engineering, Environmental, Sinkhole, Ground Subsidence, Shallow Bedrock Profiling etc)







ELECTROMAGNETICS

Used ASTRA-100 Transmitter and MARY-24 EM and Induced Polarisation IP Receiver

Detailed product description

<https://www.geotools.com.au/product/resistivity-induced-polarisation-ip-electromagnetic-em-transmitter-recvier/>

MARY-24

Transmitter "Astra-100" is designed for: Electromagnetics (EM), DC Electrical Resistivity resistivity (ERT), induced polarization (IP) measurements, "IMVP-8" frequency or time domains.

Characteristics

IMVP-8 records signals on 8 potential channels at simultaneously. "IMVP-8" 24-digit ADC's and 2500Hz sample rate

Note: VP100 transmitter sold separately (next page)

Complete EM system for US\$ 17,500 + Shipping.

Or separate component prices below

-ASTRA-100 Transmitter US\$ 8,600 + Shipping.

-MARY-24 EM-Receiver US\$ 7,200 + Shipping.

-8 channels IMVP-8 Receiver US\$ 6,900 + Shipping.

COMPLETE EM SYSTEM READY TO WORK

- Transmitter
- Receiver
- All accessories



Electromagnetics, TDEM, CSEM and Induced polarisation IP



Used ASTRA-100 Transmitter and MARY-24 EM and Induced Polarisation IP Receiver

Complete system for US\$ 17,500 + Shipping.

Detailed product description

<https://www.geotools.com.au/product/resistivity-induced-polarisation-ip-electromagnetic-em-transmitter-reciever/>

Or separate component prices below

[EM-surveying-using-ASTRA-100-transmitter-and-MARY-24-EM-Reciever.pdf \(geotools.com.au\)](#)

-ASTRA-100 Transmitter US\$ 8,600 + Shipping.

Condition and Specifications

Transmitter "Astra-100" is designed for different geophysical methods including DC apparent resistivity measurements, induced polarization measurements, frequency sounding and others. "IMVP-8" is designed for apparent resistivity or induced polarization measurements in frequency or time domains.

-MARY-24 EM-Receiver US\$ 7,200 + Shipping.

Characteristics

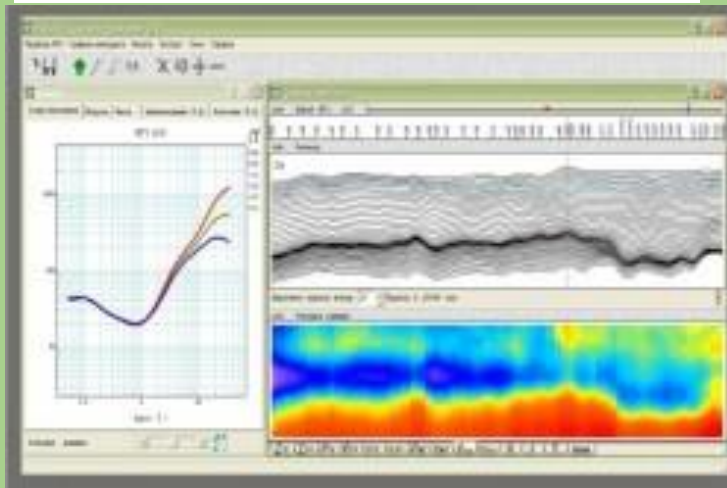
"IMVP-8" receiver allows recording signals on 8 potential channels at once. It has 8 independent ADC's, so it may be applied for using with a wide range of geoelectrical non-conventional arrays, e.g. an array with 8 potential lines sequentially connected to each other.

-8channels IMVP-8 Receiver US\$ 6,900 + Shipping

Advantages

This multi-channel receiver "IMVP-8" decreases prime cost of the research works. 24-digit ADC's and 2500Hz sample rate

VP-1000 Transmitter US\$ 9,200 + Shipping.



Our most recent instrumentation product is an 8-channels receiver "IMVP-8" developed for frequency- and time-domain induced polarization (IP) measurements. It can also be used for all kind of DC techniques as well as for FD CSEM.



[Astra-100](#)



[IMVP-8](#)



[MARY-24](#)

Along with the in-house developed instruments, our company also trades in geophysical instruments produced by other manufacturers. Besides the production of "Phoenix Geophysics Ltd." (Canada) and Iris Instruments (France), we also offer our clients these electromagnetic prospecting instruments and equipment: systems "TEM-FAST" (Russia-Holland) and "Cycle-5" (Russia), generator "VP-1000" (Russia), various electrodes including nonpolarizable,

TDEM, and Induced polarisation IP

Used VP-1000 Transmitter EM and Induced Polarisation IP

VP-1000
Transmitter
US\$ 9,200
+ Shipping.

Detailed product description

<https://www.geotools.com.au/product/resistivity-induced-polarisation-ip-electromagnetic-em-transmitter-reciever/>

[EM-surveying-using-ASTRA-100-transmitter-and-MARY-24-EM-Reciever.pdf](#) (geotools.com.au)

Transmitter Specifications

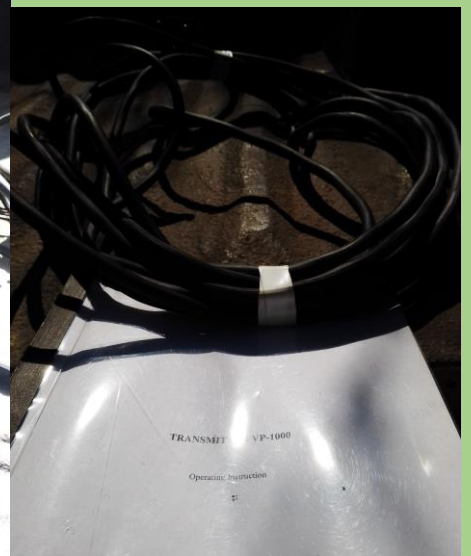
- VP-1000 transmitter is
- 1000Watt peak transmitter,
 - Maximum voltage range 50-800V
 - Output currents ranging from 0.01Amp to 2.0 Amp
 - Duration of output current pulses in RPI-2 mode: 1, 2, 4, 8, 16, 32, 64 s
 - Frequencies of output current in RPI-1 mode: 19.6, 9.8, 4.88, 2.44, 1.22, 0.61, 0.3 Hz
 - Load resistance range: 25 - 80 kOhms
 - Transmitter powered by: the external AC source of 220 V, 50 Hz Generator
 - Transmitter weight: 12 Kg.

Output wave form

Transmitter power produces bipolar rectangular current pulses and is capable of operating in two modes:

RPI-1 rectangular current pulses without intervals (AC mode)

RPI-2 rectangular current pulses with intervals, having the same duration as the pulses.



Electromagnetics EM for Engineering, Groundwater & Environmental 0.5m-to-60m.

New GF Instruments CMD-DUO 2men probe
Conductivity mapping systems for depths 7.5, 15,
30m-to-60m applicable to Engineering,
Groundwater Agriculture and Environmental

Call / E-mail
for pricing
+ Shipping.

Detailed product description

<https://www.geotools.com.au/product/3-shallow-electromagnetic-em-engineering-environmental/>

Condition and Specifications

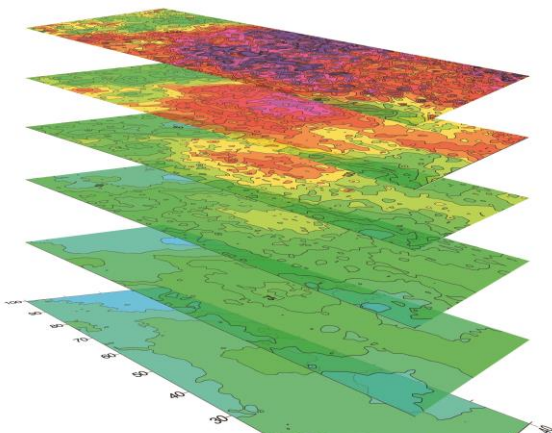
New CMD-DUO: single-depth, two-men operated probe

with variable depth range 15 / 7.5 m or 30 / 15 m
or 60 / 30 m

for measurement of deeper situated structures
(weathered zones, bedrock, cavities).

Data download via USB or flash disk

Rechargeable Li-Ion battery lasts for 2-3 working
days, Lightweight and rugged design



Single Depth or Multi-depth Electromagnetics
EM Conductivity Mapping systems (for
Engineering & Environmental 0.5m-to-60m.

New GF Instruments CMD Electromagnetics (EM)
earth Conductivity mapping systems for depths
0.5m-to-60m applicable to Engineering,
Agriculture and Environmental

Call / E-mail
for pricing
+ Shipping.

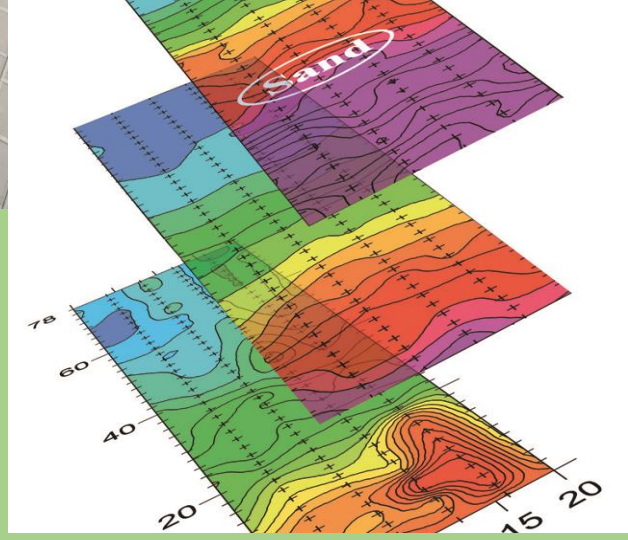
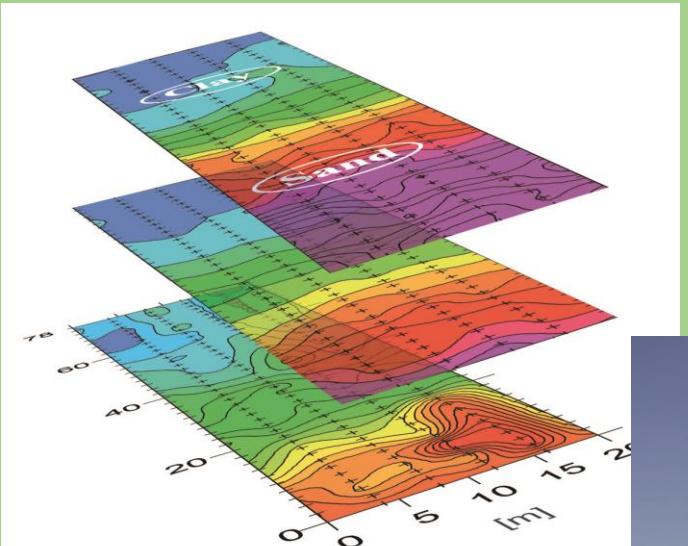


Detailed product description

<https://www.geotools.com.au/product/3-shallow-electromagnetic-em-engineering-environmental/>

Condition and Specifications

- Multi-depth profiling and mapping (0.15 – 6 m),
- Standard or custom-made probes (1 or 3 or 6 receivers)
- Fast sampling (up to 10 Hz), high temperature stability,
- One control unit for all probes (B/W or colour display)
- Simple operation, optional smartphone app
- Manual and continuous measuring modes with GPS,
- Two Bluetooth channels (for probe and external GPS)
- Real-time clock, map preview of area coverage
- Data download via USB or flash disk
- Rechargeable Li-Ion battery lasts for 2-3 working days,
- Lightweight and rugged design



Very Low Frequency (VLF) for Groundwater & Environmental

Have you had some dry / low-yielding boreholes you thought had good fractured zonesbut the fractures were dry or only moist...??

Has your Resistivity let you down?.....



Be smart,before you set-up aimless resistivity profiles and end-up with nothing..... quickly run a VLF system to prioritise your targets, then Resistivity, EM etc.

Used ABEM WADI VLF SYSTEM

US\$ 5900
+ Shipping.

Detailed product description

<https://www.geotools.com.au/product/3-shallow-electromagnetic-em-engineering-environmental/>

ABEM WADI VLF SYSTEM (Used)

Condition

- Used Fully functional, accurate and consistent readings.
- Comes with a 3 months warranty covering parts and repairs.
- has signs of cosmetic wear/ scratches typical of fieldwork equipment.
- Complete with carry harness, manuals and software.
- highly effective for groundwater within 65-85m depth which is average depth of most wells.

Types of Geophysical Survey

➤ Very Low Frequency- Electromagnetic (VLF- EM)



The instrument-	ABEM WADI VLF
Working principle-	Very Low Frequency radio waves (15-30 kHz)
Penetration depth-	60 to 80 m

WADI finds structures where useful quantities of underground water may be trapped in rock fractures and cavities, thus enabling drillers to select the most promising sites for their wells.

Magnetotelluric (MT) / CSAMT

Deep investigations

1.5Km-to- Several Km depth

New ARMAT-5 Five channel 16/24-bit broad spectrum EM/ CSAMT, CSEM Magnetotelluric (MT) Survey system

Call / E-mail for pricing + Shipping.

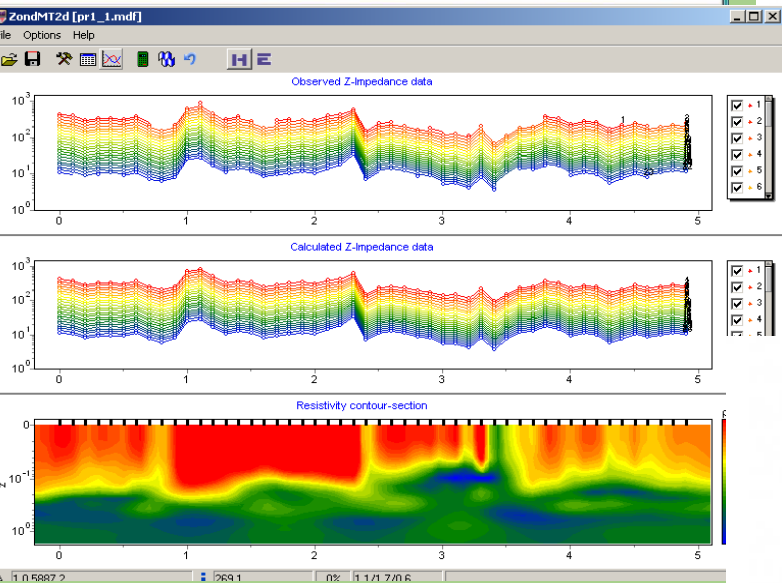
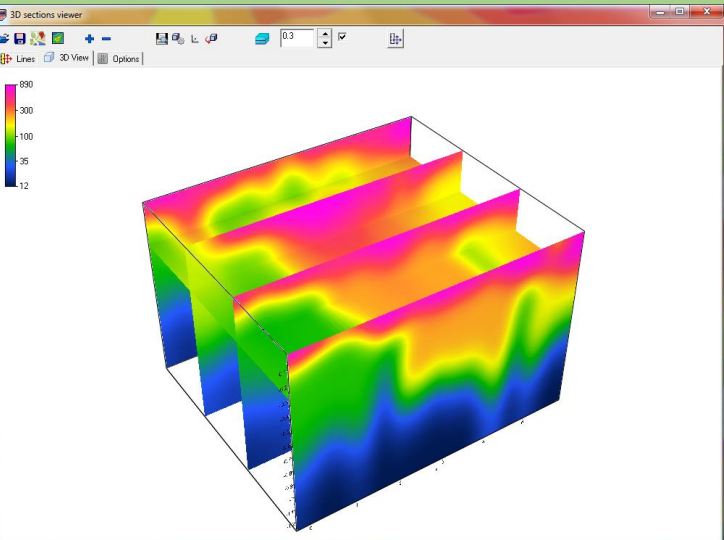
Detailed product description

<https://www.geotools.com.au/product/3-magnetotelluric-mt-amt-csamt/>

Condition and Specifications

ARMAT-5 complex is designed for implementation of a variety of electric survey methods: AMT, CSAMT, CSEM, RMT, CSRMT. Its wide frequency range (0.1 Hz–1 MHz) makes it possible to apply this tool to explore depths from first meters up to several kilometers for wide range of targets.

- Large set of methods
- Frequency bandwidth 0.1 Hz–1 MHz
- 5 channels of registration
- Programmable external amplifiers
- Built-in data processing and visualization
- Automatic calibration



**MAGNETOTELLURIC
(MT/AMT/CSAMT)
Deep Investigations
MTC-50H Magnetic sensor coils antenna**



Used Phoenix MTC-50H Magnetic field Sensor coils antenna for MT/AMT/CSAMT Deep Magnetotelluric surveys

US\$
Per Coil antenna
+ Shipping.

Acquire magnetotelluric data at frequencies up to 400 Hz and down to 0.00002 Hz (50 000 seconds)

Discounted
US\$ for all 4
coils
purchased as
lot.

Detailed product description

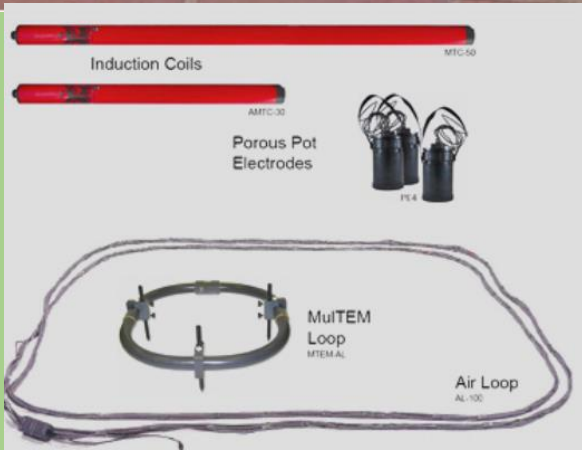
<http://www.phoenix-geophysics.com/products/sensors/>

Compatible with Phoenix systems V5 2000 System or System2000.net instruments

Specifications

MTC-50H magnetic sensor coils weigh approximately 8 kg, and measure only 144 cm. They provide magnetotelluric data at frequencies up to 400 Hz and down to 0.00002 Hz (50 000 seconds). As of 2010, the MTC-50H replaces the older MTC-50 sensor.

MTC-50H response Characteristic



Model MTC-50 (now replaced by MTC-50H, the old one is similar or better)

Overall Length : 144 cm

Outside Diameter : 6.0 cm

Weight : 8.2 kg

Frequency Range (for MT) : Up to 400 Hz, down to 0.00002 Hz

Sold (not available)

LOW-COST RESISTIVITY METERS (Low-transmitter Power / Receiver Sensitivity)

Please note these are relatively lower-cost, low-power earth resistivity meter options, they are based on Wenner and Schlumberger array design as most terrameters and are used for Resistivity profiling and Sounding (VES). They are suitable for Shallow-to-medium geophysical investigation 0-60m (depending on the ground) readings will be accurate and consistent. Applications include: Engineering / Environmental surveys, earthing surveys and simple Groundwater investigations. Deeper than 60m or thick Clay-masked / conductive overburden (such as laterite) or high contact resistance sands, readings may become somewhat unstable, data may get noisy as the transmitter struggles to inject big currents / Receiver design may be noise-saturated.



RL GEO RESISTIVITY METER

(with manual VES / Profiling Cables 150m length)

US\$ 3,100

+ Shipping.

Condition

- Fully functional, accurate and consistent readings (shallow-medium investigations).
- has slight signs of cosmetic wear typical of fieldwork equipment.
- Has internal battery but can be powered from an external battery.

LOW-COST EARTH RESISTIVITY METERS profiling & Sounding VES

(with manual VES / Profiling Cables 150m length)

US\$ 3,100

+ Shipping.

Detailed inspection

<https://www.geotools.com.au/product/agi-sting-r1-swift-ministing-swift-28-electrode-resistivity-imaging-system-active-switching-cables/>

Condition

- Fully functional, accurate and consistent readings (shallow-medium 0-60m investigations).
- has slight signs of cosmetic wear typical of fieldwork equipment.
- Has internal battery but can be powered from an external battery.

AGI STING SWIFT Switching box

(Do more (2d/3d) with your simple STING R1/ MiniSTING)

US\$ 2,850

+ Shipping.

Detailed inspection

<https://www.geotools.com.au/product/agi-sting-r1-swift-ministing-swift-28-electrode-resistivity-imaging-system-active-switching-cables/>

Condition

- Used, aged but still functional, accurate and consistent readings.
- No STING-SWIFT connector cables only, nor electrode cables included
- New generic battery replaced, external powering modification
- Signs of cosmetic wear typical of fieldwork equipment.
- Can power from an external battery.



Figure 13 The Swift interface box.



Figure 17 The

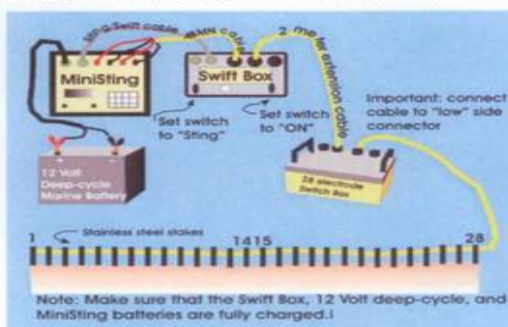


Figure 18 MiniSting/Swift/Switch Box 28

PILE INTEGRITY TESTING

New IDS-1, IDS-2 PILE INTEGRITY TESTING (Sonic Echo_) to 60m depth (Complete)

Call / E-mail
For pricing
+ Shipping.

Detailed inspection

<https://www.geotools.com.au/product/4a-pile-integrity-testing/>

<https://www.youtube.com/watch?v=i8IC896TTHA>

<https://www.youtube.com/watch?v=Y5j2aUdCaTY>

This instrument "IDS-1" and IDS-2 can determine the length of reinforced concrete piles, Steel and Wooden piles up to sixty meters in length, such piles applicable to deep pile foundation buildings, Dams, Piers, Telecom Communication towers and Marine structures including jetty.

Engineers can also use IDS -1 and IDS-2 for surveying a structures' foundation and examining concrete hydraulic structures, as well as inspecting underground tunnels, sewers, underground storage tanks.

APPLICATIONS

- Determining the length, integrity, average strength, and defects of piles
- Surveying structures foundation
- Examining concrete hydraulic structures
- Inspecting tunnels, sewers, underground storage tanks
- Measuring thickness of foundation slab and detecting cavities under them
- Examining condition and strength of concrete structure.

PILE TESTING DEVICE IDS-1



For inspection piles and foundations

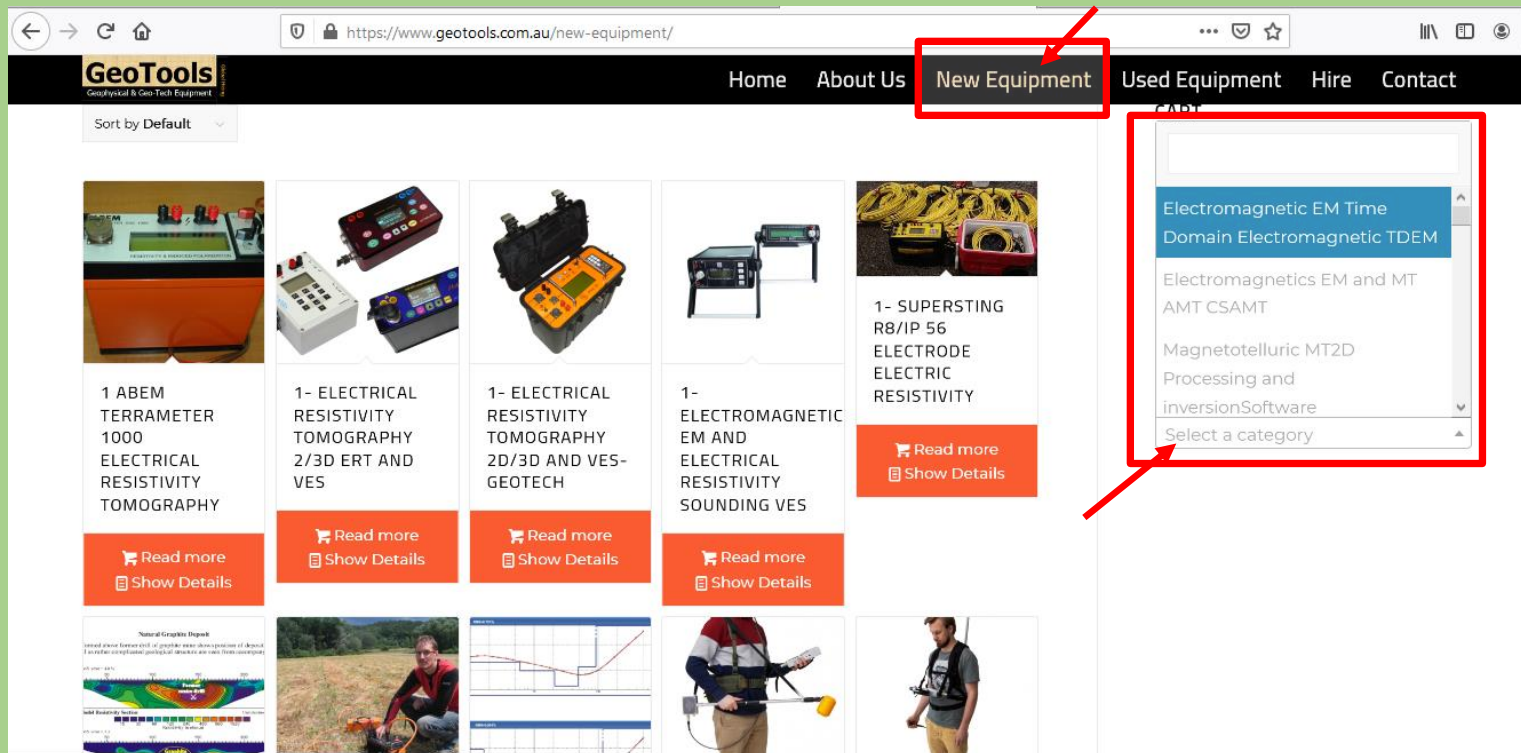


New equipment

GEOTOOLS AUSTRALIA PTY LTD supplies a wide range of new geophysical equipment (New & Used) including: Time Domain EM, Magnetometers, Gradiometer-Magnetometers, Electrical Resistivity Tomography (ERT), Seismics, Marine seismics, Magnetotelluric, Ground Penetrating, Concrete NDT systems etc.

You can explore the range by clicking on link below and navigate the categories.

<https://www.geotools.com.au/new-equipment/> → **New Equipment** → **Explore the categories**



Please note: In the event of expressing interest, the above catalogue should not be considered a proforma invoice, we recommend that you contact us first to confirm availability, price and details of terms and condition. Upon request, a formal quotation shall be raised.

Besides equipment supply, we enjoy discussing geophysical challenges including surveys and data processing. Looking forward to serving you.

Regards

Paul Ssali
Senior Geophysicist (MSc)
GEOTOOLS AUSTRALIA



email: admin@geotools.com.au www.geotools.com.au