

Email: admin@geotools.com.au www.geotools.com.au Tel: +61488913860

USED & NEW GEOPHYSICAL / GEOTECHNICAL / SURVEYING EQUIPMENT CATALOGUE

Equipment / Application

Description / condition

Price (US\$)



Used AGI SUPERSTING R1/IP (56 ACTIVE Multi-electrode cables system

US\$ 25,950
+ Shipping.

Condition

- Comes with valid Test and Calibration certification (2023) from manufacturer Advanced Geosciences AGI,
- Fully functional, good condition.
- Complete with manuals, firmware, accessories as shown.
- Comes with 3 months warranty on Resistivity Meter console not including cables or connecting accessories.
- This instrument has been in use, it has visible signs of cosmetic wear/ scratches marks, typical of fieldwork equipment.

Cables: Total 56 Take-outs ACTIVE cables composed of x4 Spread Cables with 14 Take-outs, 20-ft spacing between take-outs sections each composed of 7 sections of each 8 take-outs).

Save over \$ 14,000 in Switchbox Costs!

ACTIVE CABLES -NO NEED FOR SWITCHBOX



Equipment / Application

Description / condition

Price (US\$)



Used IRIS SYSCAL PRO SWITCH 72 SYSTEM (Combine Transmitter, Receiver and Switchbox in one unit). 72 take-outs multi-electrode cables system

US\$ 27,950
+ Shipping.

Condition

- Used, Complete and fully functional.
- Comes with valid Test and Calibration certification (2022) from manufacturer IRIS INSTRUMENTS,
- Complete with manuals, firmware, accessories as shown.
- Comes with 3 months warranty on Resistivity Meter console not including cables or connecting accessories.
- This instrument has been in use, it has visible signs of cosmetic wear/ scratches marks, typical of fieldwork equipment.

Cables: 72 Take-outs spaced 5m, composed of X2 sections of cable, each 36 take-outs).

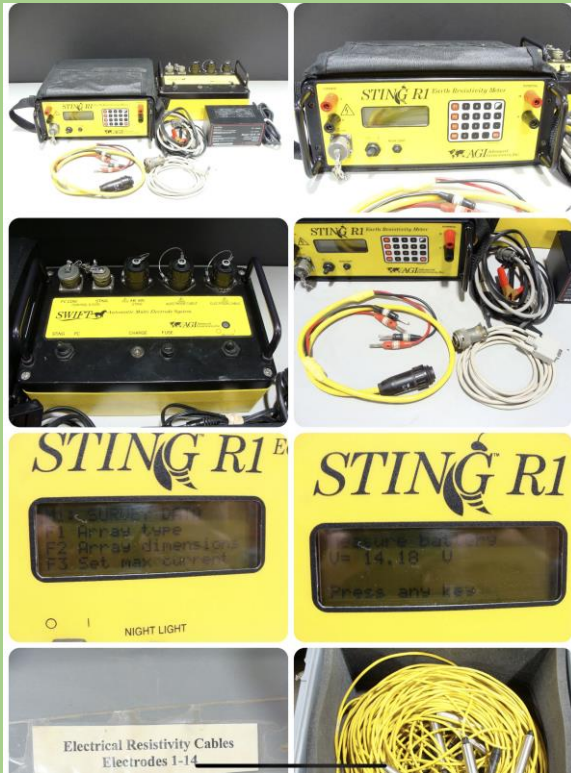
Investigate Deep with this 72-Electrodes monster!
Good Cables, 5m take-out spacing,
Do Both Resistivity and IP Jos (diversify your business)
Sealed Cables for Land/Borehole and Marine Res (diversify)



Equipment / Application

Description / condition

Price (US\$)



Used AGI STING R1 + SWIFT (28 ACTIVE Multi-electrode cables system

US\$ 15,250
+ Shipping.

Condition

- Fully functional and Complete with all accessories.
- Good working condition and Presentation (well looked after)
- Complete with manuals, firmware, accessories as shown.
- Comes with 3 months warranty on Resistivity Meter console not including cables or connecting accessories.
- This instrument has been in use, it has visible signs of cosmetic wear/ scratches marks, typical of fieldwork equipment.

Cables: Total 28 Take-outs **ACTIVE cables** composed of x2 Spread Cables sections with 14 Take-outs, 5m spacing between take-outs sections.

Shoot-2-Birds (VES and ERT Jobs)

Low-Cost Affordable Option for Near-Surface Engineering and Environmental jobs (Diversify your business, offer more!)



Diversify your Business!

1D, 2D, 3D, 4D RESISTIVITY INVESTIGATIONS

for characterizing underground structures:

- ENVIRONMENT
- CIVIL ENGINEERING
- GROUNDWATER
- ARCHAEOLOGY
- MINING EXPLORATION

TEN SIMULTANEOUS CHANNELS:

for high speed data acquisition, up to 1 000 rdgs/mn

UP TO 800 - 1 000V, 2.5A OUTPUTS:

for penetration & data quality

AUTOMATIC SWITCHING CAPABILITY:

for 24, 48, 72, 96, 120, up to 1 300 electrodes

RESISTIVITY & INDUCED POLARIZATION:

twenty IP chargeability windows

Used IRIS SYSCAL PRO SWITCH 72 SYSTEM
(Combine Transmitter, Receiver and
Switchbox in one unit).

**72 take-outs multi-electrode cables system
composed of x6 Spread Cables 12 Take-outs**

US\$ 27,950
+ Shipping.

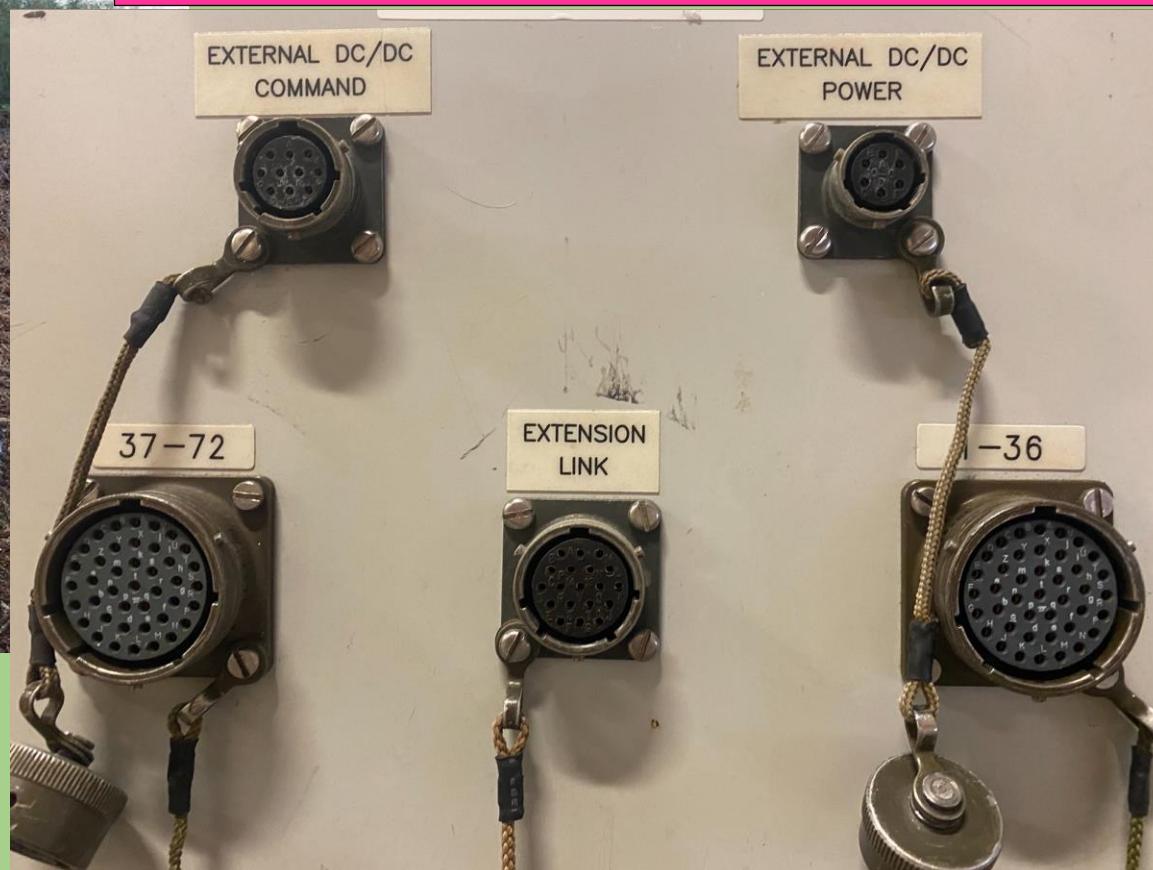
Condition

- Used, Complete and fully functional.
- Comes with valid Test and Calibration certification (2022) from manufacturer IRIS INSTRUMENTS,
- Complete with manuals, firmware, accessories as shown.
- Comes with 3 months warranty on Resistivity Meter console not including cables or connecting accessories.
- This instrument has been in use, it has visible signs of cosmetic wear/ scratches marks, typical of fieldwork equipment.

Cables: The system is supplied with 6 x spread cables, 2 x connection boxes, Syscal Pro, chargers, external power cable and transit case.

**With 72 electrodes, 10 Channels and big power
(1000 Volts), choke your competitors!**

Versatile Machine to Resistivity and IP !



New MEDUSA+SKAT Electrical Resistivity Imaging/
induced polarisation IP system

Call / E-mail
for pricing
+ Shipping.



Detailed Product description and User manual
<https://www.geotools.com.au/product/2-electrical-resistivity-tomography-2-3d-ert-and-ves/>

**Complete with Software
2 years warranty on hardware &
Software**

2D/3D resistivity & IP tomography

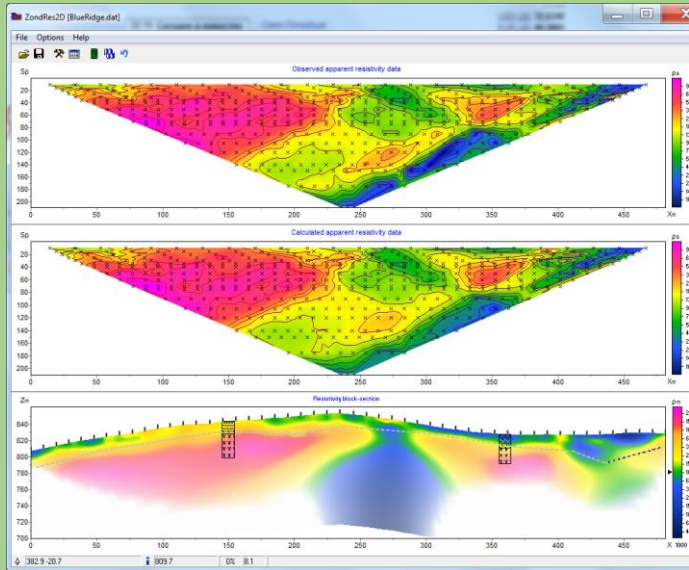
-1D Profiling and Vertical Electrical Sounding VES
Complete with Data processing Software

Specifications

Geoelectrical complex that consists of the recorder SGD-EEM MEDUSA and transmitter SGD-EGC SKAT III and

switchbox CommDD2 is intended for geophysical studies with the variety of techniques such as:

- Direct current methods
 - Electrical resistivity tomography
 - Induced polarization
 - Frequency sounding
 - Self potential
-
- 1500 V_{p-p} – 1A – 200 W transmitter
 - Single-channel receiver
 - 2D/3D resistivity & IP tomography
 - VES, RP, SP measurements



**VES, Profiling, 2D/3D ERT and IP
Diversify your business...Escape
the Competition!**

- Geophysical prospecting
- Hydrogeological studies
- Geotechnical studies
- Environmental studies
- Archaeology



Used SYSCAL R1 PLUS Resistivity meter With manual VES Cables 250m (for 1D (VES/Profiling only) (Not 2D/3D ERT System) Condition

US\$ 7,900 + Shipping.

- The instrument has just had annual service and comes with valid Test and Calibration certification (2022) from manufacturer IRIS INSTRUMENTS, France
 - Used, Complete, fully functional
 - Comes with 3 months warranty on hardware (parts and repairs) and software
 - Complete with manuals and connector cables
- Cables: 1D Manual single-core Cables for Vertical Electrical Sounding (VES), and resistivity profiling
- This instrument has been in use, it has visible signs of cosmetic

http://www.iris-instruments.com/Pdf_file/Resistivity_Sounding/summary_of_operation.pdf

Applications

- Hydrogeology/ Groundwater exploration
- Environmental Geophysical investigations
- Earthing and Grounding of domestic, power grid networks and Substations
- Geotechnical Engineering



Used ABEM TERRAMETER SAS 1000 With manual VES Cables 250m on reels

US\$ + Shipping.

- Condition
- Very lightly used, fully functional, good condition.
 - Comes with 3 months warranty on hardware (parts and repairs) and software
 - Complete with manuals and connector accessories
 - Might slight signs of cosmetic wear/ scratches typical of fieldwork equipment.

Detailed product description
https://www.geotols.com/wp-content/uploads/2011/04/Terrameter-SAS-1000-let-flet_2012121.pdf



Sold (not available)

New ARES Electrical Resistivity Imaging/ IP system

Call / E-mail for pricing + Shipping.

Detailed Product description and User manual

<https://www.geotools.com.au/product/1-ares-electrical-resistivity-tomography-and-ves/>



**For VES, Profiling, 2D/3D ERT and IP
Bigger transmitter power 850 W, bigger current 5A, 2000Vp-p
MORE POWERFUL TRANSMITTER**

2D/3D electrical Resistivity ERT and IP Tomography cables
-1D Profiling and Vertical Electrical Sounding VES
Complete with Data processing Software

Specifications

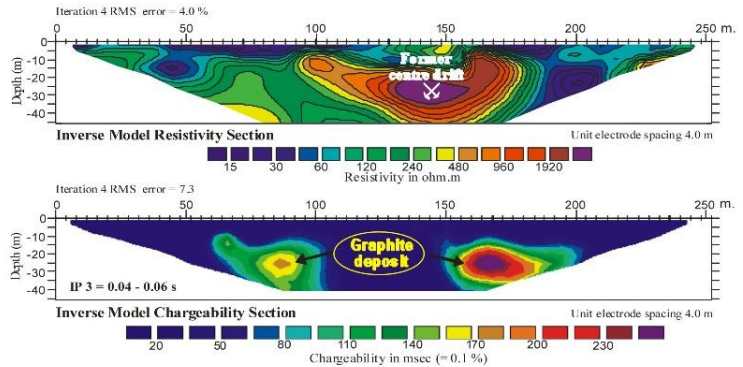
- Brand new, fully functional comes with 1 year' s warranty on hardware and software
 - 2000 V_{p-p} – 5 A – 850 W transmitter
 - Single-channel receiver
 - 2D/3D resistivity & IP tomography
 - VES, RP, SP measurements
 - Up to 10 adjustable IP windows

12 months warranty on hardware & Software



Natural Graphite Deposit

IP Section performed above former drift of graphite mine shows position of deposit. Position of the drift as well as rather complicated geological structure are seen from accompanying resistivity section.



Used AGI SUPERSTING R1/IP (No Multi-electrode cables (With manual VES Cables 250m

US\$ + Shipping.

Condition

- Very lightly used, fully functional, good condition
- Comes with 3 months warranty on hardware (parts and repairs) and software
- Complete with manuals, wires and accessories
- Might show signs of cosmetic wear/ scratches typical of

Sold (not available)



New ARES-II Electrical Resistivity Imaging/ IP system

Call / E-mail for pricing + Shipping.

Detailed Product description and User manual

<https://www.geotools.com.au/product/1-aeris-ii-electrical-resistivity-tomography-2d-3d-and-ves/>

WITH BIGGER POWER... YOU SEE DEEPER

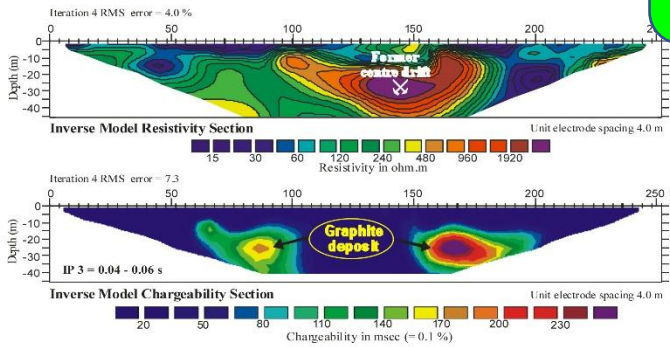
850 W, current 5A, 2000Vp-p

Compare the market!



Natural Graphite Deposit

IP Section performed above former drift of graphite mine shows position of deposit. Position of the drift as well as rather complicated geological structure are seen from accompanying resistivity section.



- 850 W – 2000 V_{p-p} – 5 A transmitter for all multi-electrode and manual modes
- Power boosting with parallel coupling of more ARESII units

Full power applicable for all 1D,2D and 3D multielectrode measurements

- 10-channel or single-channel receiver with up to 20 adjustable IP windows
- 2D/3D Resistivity & IP tomography
- VES, RP, SP measurements
- continuous or timed survey
- Supports 1-, 5- or 10-channel measurements using Active multi-electrode cables
- Passive cables with switch box
- Roll-along possibility
- Easy operation with graphical screen
- Data download via USB port or USB flash memory stick
- Supply from 12 V battery or AC/DC convertor
- GPS connectivity



Deep VES, 2D, 3D Tomography surveys

- Groundwater exploration
- Mineral exploration
- Geotechnical & Engineering

Applications:

- Groundwater exploration,
- geotechnical investigation,
- Monitoring of dams and dikes,
- Environmental studies and monitoring contaminant plumes
- Geological survey,
- Mineral prospecting IP
- Archaeology,
- Detecting of cavities and buried objects, underwater, marine, borehole and cross-hole measurements.

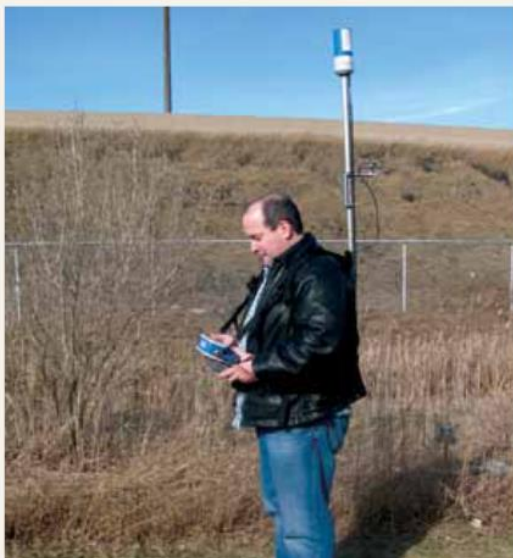


10(or 5) Channel Switch Box II for 48 outlets for passive cables

APPLICATIONS

Since the ENVI PRO system capabilities are versatile, it can be used in a variety of applications including:

- Mineral Exploration
- Geological Mapping
- Environmental Site Characterization
- Groundwater Exploration
- Groundwater Studies
- Geotechnical Studies
- Civil Engineering
- Archaeology



Near-New Scintrex ENVI PRO PROTON Precision Magnetometer / Gradiometer

US\$ 25,950
+ Shipping.

Features

The Scintrex ENVI PRO system offers the flexibility to find the increasingly more elusive anomalous targets.

A complete ENVI PRO is low cost, lightweight, portable proton precession magnetometer/gradiometer, which enables to survey large areas quickly and accurately.

- Portable Field and Base Station Magnetometer
- True Simultaneous Gradiometer
- GPS Integrated positioning
- Complete with mapping software

Condition

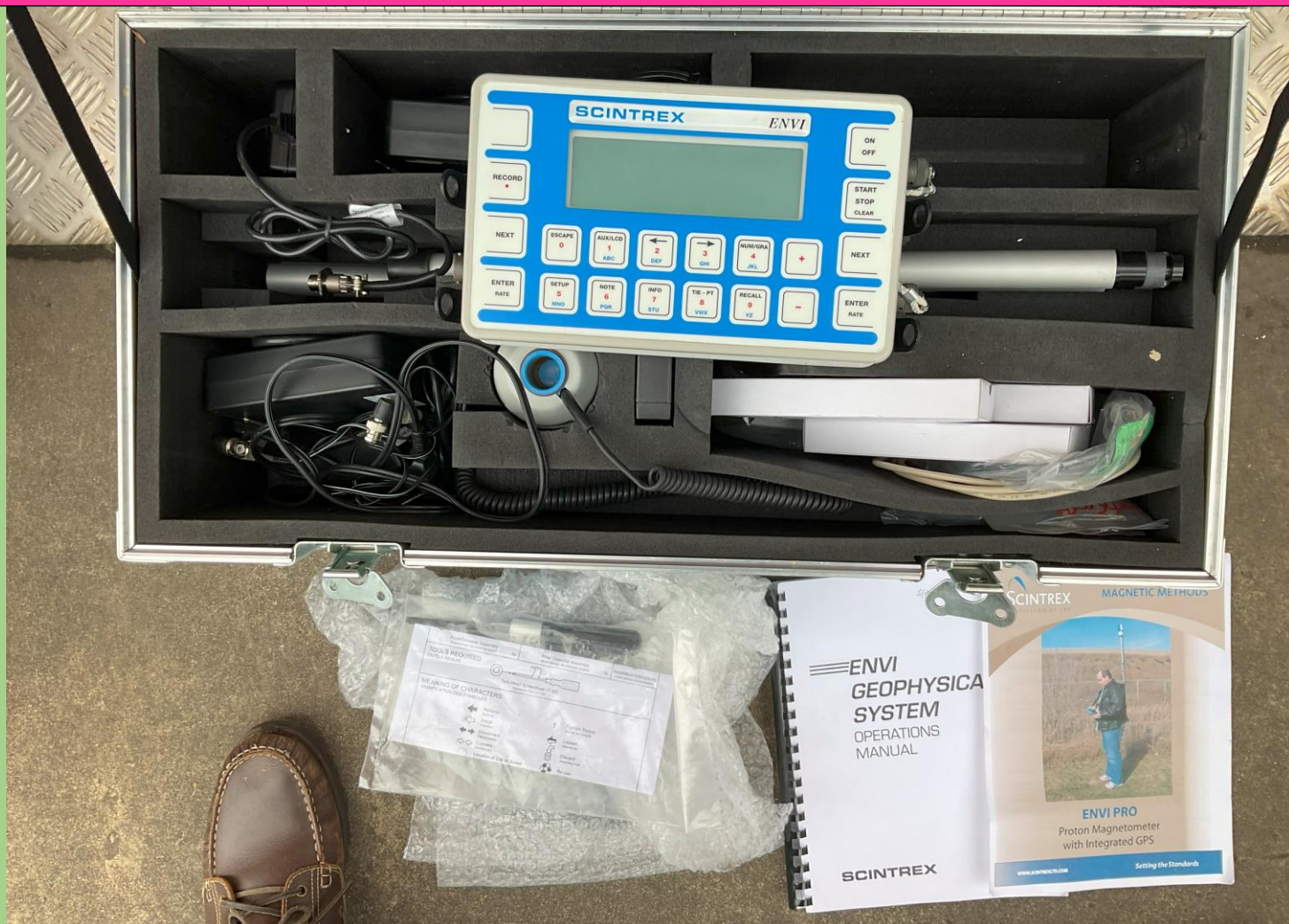
- **Near-NEW Condition, done only 2 Projects.**
- Fully functional, good condition, very clean
- Complete with manuals, firmware, accessories as shown.
- All used equipment comes with 3 months warranty.
- Complete with Scintrex firmware and mapping software

[https://scintrexltd.com/wp-](https://scintrexltd.com/wp-content/uploads/2017/02/Envi-Pro-Manual-2_0.pdf)

[content/uploads/2017/02/Envi-Pro-Manual-2_0.pdf](https://scintrexltd.com/wp-content/uploads/2017/02/Envi-Pro-Manual-2_0.pdf)

One machine....Many applications

Diversify your business...Choke your competitors!



Used GEM GSM-9 V5.0 OVERHAUSER MAGNETOMETER.

US\$ 7900
+ Shipping.

Comes with recent Service / Calibration report from manufacturer GEM SYSTEMS FOR MINERAL EXPLORATION, MINING, OIL & GAS, GROUNDWATER

Condition

- Complete, fully functional, good working condition
- 3 Batteries, Charger, Original transportation case, sensor pole, user manual, data download cables
- Comes with 3 months warranty on hardware.
- Might have light signs of cosmetic wear/ scratches typical of fieldwork equipment.

Detailed product description

<https://www.gemsys.ca/rugged-overhauser-magnetometer/>



Applications

Overhauser magnetometers used in

- Engineering and Environmental Geophysical investigations
- Archaeology
- Pipeline mapping,
- UXO detection

With Service / Calibration Certificate 2021



with recent Test / Calibration certification from the manufacturer

Marine Magnetometers

Engineering, Environmental, Unexploded Ordnance UXO

Equipment / Application

Used JW FISHERS PROTON-3 MARINE MAGNETOMETER

US\$ 8,900
+ Shipping.

(Fully functional, Complete, IN GOOD CONDITION , DONE VERY LITTLE WORK

Description

Key Features:

- Commercial grade construction,
- High gamma sensitivity,
- Extremely large detection area, 1,500 feet (NT: About 450 meters) on each side (3,000 feet (NT: About 900 meters)
- The detection range is not affected by the medium between the metal detector and the metal target
- The Proton 3 system includes a torpedo tow with 150 feet of cable, and an upper side control unit.
- Faster towing speeds than pulse systems, and ability to make a permanent record of readings.



Think outside the Box Escape the competition!



Marine Metal Detection Magnetometers

Engineering, Environmental, Unexploded Ordinance UXO

Equipment / Application



Used JW FISHERS BOAT-TOWED PULSE-10 UNDERWATER METAL DETECTOR / MAGNETOMETER

US\$ 5,200
+ Shipping.

(Fully functional, Complete, IN GOOD CONDITION , DONE VERY LITTLE WORK

Description

JW Proton-10 system is an economical yet powerful boat towed metal detector for ferrous and non-ferrous metals.

Features

- 12 foot wide and 8-foot-deep detection envelope his detector will locate a variety of targets.
- Pulse 10 is not affected by the minerals in salt water, coral, rocks with a high iron content, or magnetic sand; all of which cause erratic readings in conventional detectors.
- 18-inch search coil with 150 feet of cable,
- Towfish, and the top-side control unit.
- The control unit features high/low sensitivity switch (for pinpointing targets).
- The system is powered by two 12-volt batteries with a total power consumption of only 8 watts.

Think outside the Box Escape the competition!





Used GEOMETRICS G-859 CESIUM VAPOUR MAGNETOMETER

FOR MINERAL EXPLORATION, MINING, OIL & GAS, GROUNDWATER

Condition

- Complete, fully functional, good working condition
- WAAS/EGNOS/MSAS enabled Tallysman™ GPS.
- Comes with 3 months warranty on hardware (parts and repairs)
- Complete with manuals and connecting cables
- Might have light signs of cosmetic wear and scratches typical of fieldwork equipment.

US\$ + Shipping.

Sold (not available)

Detailed product description

<https://www.geometrics.com/product/g-859sp/>



New OMEGA-48/96M Electrical Resistivity Imaging/ IP induced polarisation system

Call / E-mail for pricing + Shipping.

Detailed Product description and User manual

<https://www.geotools.com.au/product/1-electrical-resistivity-tomography-2d-3d-and-ves-geotech/>

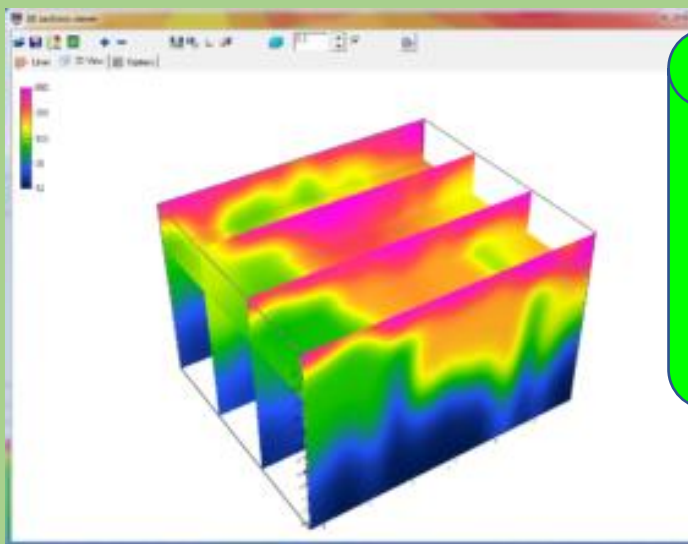
12 months Warranty on hardware and software

- 2D/3D resistivity & IP tomography
- 48, 96 Electrodes configurations
- 1D Profiling and Vertical Electrical Sounding VES

Complete with Data processing Software

Specifications

- 500 V_{p-p} – 5 A – 500 W transmitter
- Single or dual channel receiver
- 2D/3D resistivity & IP tomography
- VES, RP, SP measurements



**WITH BIGGER POWER...
YOU SEE DEEPER**
500 W, current 5A, 500Vp-p
Compare the market!



New **DOLANG 24 Channels Telemetry SEISMIC SYSTEM (DBS280B Engineering Seismograph)**
Made in Italy

US\$ 11,250
+ Shipping.

Detailed Product description and User manual

<https://www.geotools.com.au/product/most-affordable-24-channels-seismic-engineering-refraction-masw-borehole-environmental-site-investigation/>

Specifications

Brandnew, 24-Channels 24 Bit full telemetry cable system complete with all accessories

- 4.5Hz/ 10Hz frequency geophones receiver units for typical Engineering / Environmental applications including Refraction and **MASW**
- No battery Required for Seismograph

COMPLETE SEISMIC SYSTEM READY TO WORK

2 years warranty on hardware & Software



Cost efficient and Reliable
Made in Italy



SEISMIC

Cover **BIGGER AREAS, FASTER**
acquire **DEEPER DATA** with **48/
60 Channels** (better than 24 channels)

Used 60 Channel GEOMETRICS STRATAVIEW
SEISMOGRAPH complete with accessories,
geophones

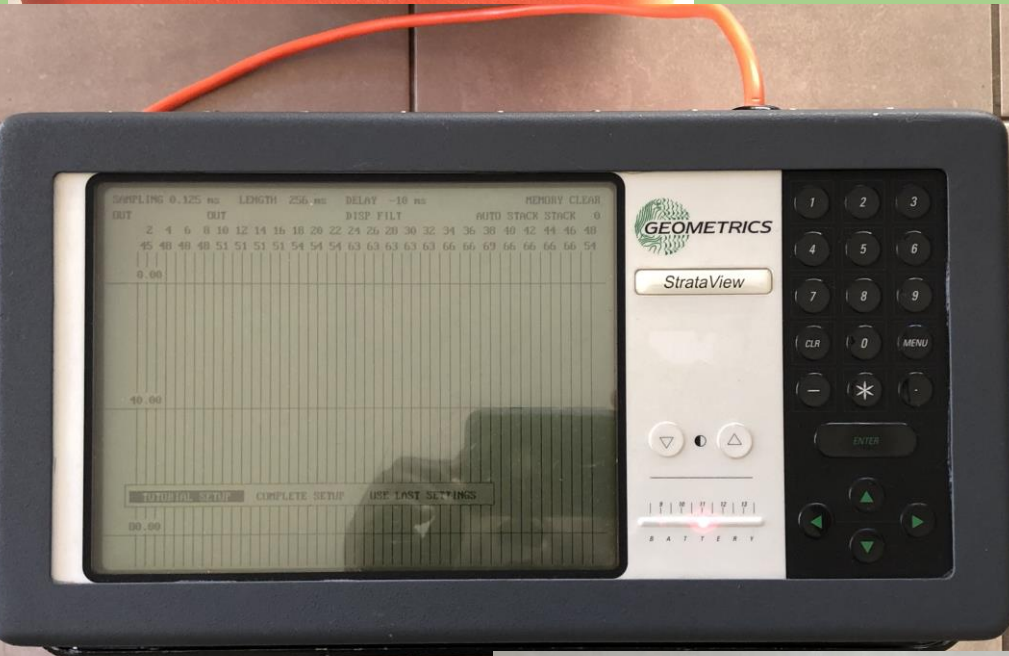
US\$ 18,900
+ Shipping.

Product inspection:

<https://youtu.be/OQTKSsaqgA>

Condition and Specifications

- Used, fully functional, complete with 60 channels 10Hz Geophones and accessories.
- Suitable for REFLECTION, REFRACTION, MASW VSP, surveys and 3C downhole or land geophones
- Automatic Refraction data processing, First-break picking, velocity analysis and generating velocity sections / lithological sections in the field.
- Can be used for 24, 48 or any set of channels as it allows temporal deactivation of unused channels.



- Can be used with 24, 48 or any number of Geophones 1-60 by deactivating unused channels.
- Provides Automated Refraction data processing, First-Breaks picking, generating velocity / lithology sections in the field
- Applicable to REFLECTION, REFRACTION, MASW, VSP and 3C Downhole / Land Geophones





New DAQLINK-3 24 Channel Seismograph
 (Complete with Geophones, Geophone cables,
 power accessories, strike plate) Cables Used

US\$ 13,900
 + Shipping.

Condition

- Brand-new Seismograph, brand-new Geophones, new trigger cable and ethernet cables, used Geophone connector cable.
- Dual purpose choice of sample frequency 4.5Hz to do both seismic refraction and MASW jobs
- Comes with a valid Calibration certificate and 3 months warranty covering parts and repairs.
- Software can be supplied for additional cost (cost not included in price above)



Used GEOMETRICS ES-3000 12 Channels
 Seismograph (Console only)

US\$ 6,900
 + Shipping.

https://www.geometrics.com/wp-content/uploads/2018/10/ES-3000_Spec_Sheet.pdf

Description and Condition

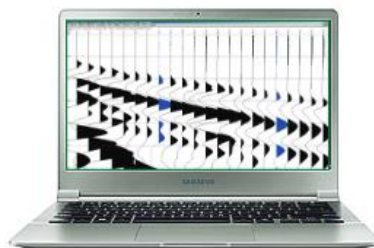
- This listing and price is for Seismograph console only.
- Seismograph in good working condition, fully functional and in good cosmetic appearance.
- This unit appears very lightly used and well-looked after.

Under a separate arrangement (at a cost), we can help in sourcing all other accessories (Geophones, Cables, Power accessories, Shot trigger and trigger extension

ES-3000
 Lightweight Seismic Imaging System



GEOMETRICS
 Innovation • Experience • Results



**Upgradeable to 24 channels.
Good brand Geometrics**



Used SUMMIT X-ONE DATA COLLECTOR

US\$ 15,850
+ Shipping.

24 Channels Seismograph (Console only)

<https://www.dmt-group.com/products/geo-measuring-systems/summit-x-one.html>

For system set-up refer to link below:

<https://youtu.be/hnitEDjoQDQ>

<https://youtu.be/u9XuYMLM6Ws>

Description and Condition

- System purchased in 2019, lightly used on few (5) small projects, well-looked after
- Complete and fully functional
- Firmware upgraded 2021
- x21 Summit X one RUs (good condition).
- 300m Summit X One Geophone leader cable
- 2 brand new Ru's replaced,
- 5 R...

**Fast Data acquisition,
Unrestricted Geophone
Spacing. Lightweight**

**RU's enable flexible
geophone spacing**





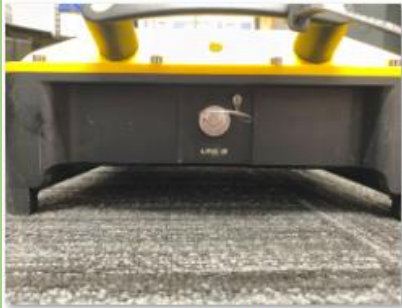
IMG_1183.JPG



IMG_1185.JPG



IMG_1187.JPG



IMG_1188.JPG



IMG_1190.JPG



IMG_1191.JPG



Still moving geophones/cables forward, working as slow as "Roll-along"?

ACQUIRE 48,96,120 CHANNELS IN ONE GO

WITH YOUR 24-CHANNEL SEISMOGRAPH.

Cover Big Areas fast, increase production-rate, reduce fatigue, and stop wasting time!

Ditch the old-school manual "roll-along" and

USE A ROLL-ALONG SWITCHBOX

(Work Smart-not-hard)

US\$ 6,850
+ Shipping.

Used **GEOSTUFF ROLL-ALONG 24**
Channels Switchbox

Condition

- Used, Fully functional
- Model RS-96/24 has inputs for up to 96 geophones and outputs for a 12 or 24-channel seismograph.

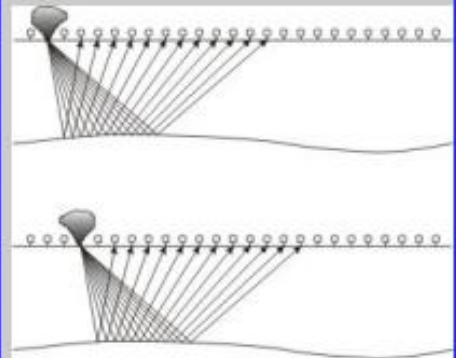
Roll-along switches are designed to automate the process of collecting continuous reflection surveys efficiently. In practice, more geophones are laid on the ground than channels available on the seismograph. The Roll-along Switch selects a subset of the available geophones for each shot point. The active geophones are moved along the ground electrically instead of physically each time the shot point is moved.





What is a rollalong switch?

Reflection surveys are conducted by moving the energy source and geophones a short distance along the ground, firing shots, and collecting overlapping sets of data. The process continues linearly until the area of interest is covered.



This laborious procedure is made efficient by placing a larger number of geophones on the ground connected through a rollalong switch to the seismograph. The switch electrically

- For seismic surveys: shallow reflection, refraction, and MASW
- Systems for 24 or 48-channel

What's more costly: Geophones or Human Time and Effort? (Work Smart-not-hard)





New GEOSTUFF BHG-2 3-COMPONENT
BOREHOLE GEOPHONE SEISMIC SYSTEM

US\$ 7,900
+ Shipping.

(Composed of: 3C Geophone, Geophone controller,
Borehole cable and connector cable to Seismograph
<https://www.geostuff.com/BHG.html>

GEOSTUFF wall-lock borehole geophones (Model BHG-2)

BHG-2 contains a 3-component geophone in an X-Y-Z orientation.

- Standard geophone elements are high-output, 15 Hz natural frequency that can operate with the tool vertical or horizontal. Elements are also available with 10, 14, 28 or 40 Hz natural frequencies.
- The outside diameter is 1.85 inches (47 mm), small enough to fit inside a schedule-40, 2-inch plastic pipe.
- Clamping mechanism is a robust, steel spring compressed by a DC electric motor.
- No rubber bladders to break or tubes to leak, and operation is relatively independent of depth. BHG-2 models have been used to depths of 500 meters.

BHGC-1: CONTROLLER

This control unit switches power to the clamp mechanism and compass and directs the geophones signal to your standard seismograph.





New GEODEVICE 24 Channels HYDROPHONE WELL STREAMER

Call / E-mail for pricing + Shipping.

Detailed Product description and User manual

<https://www.geotools.com.au/product/5-borehole-seismic-hydrophone-arrays-vertical-seismic-profiling-vsp-and-crosshole/>

Specifications

WellStreamer is a borehole hydrophone array, specially developed for seismic acquisitions in the water-filled wells.

Designed exceptionally easy to use and robust receiver array with high sensitive piezoceramic sensors for registering compressional (P) waves during VSP and cross hole surveys.



The standard diameters of the containers are 36 / 60 / 80 mm, thus allowing operations in wells with diameters starting from 40 mm.

The set includes:

- Pulse source
- Power cable
- Reel with high-voltage slip ring
- Wire to connect a reel and an energy source

Borehole Sparker Pulse

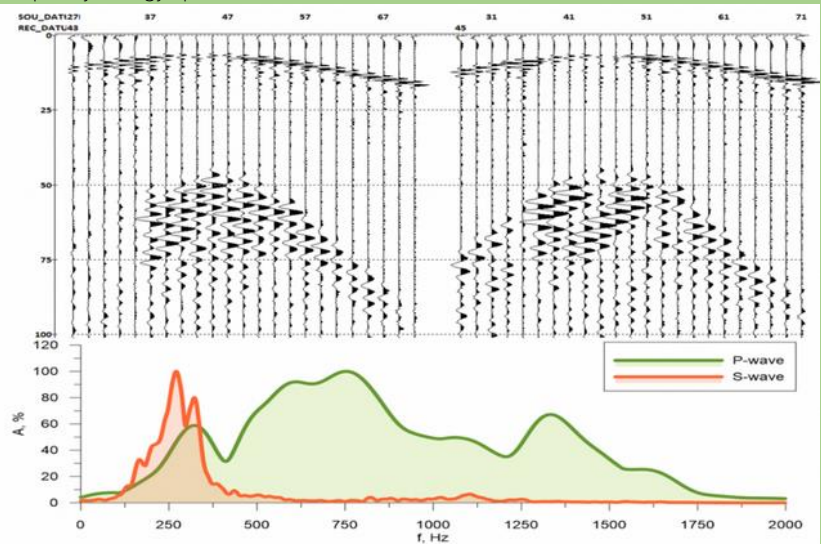
<https://geodevice.co/main/seismic/sources/sparker/p-s-bh/>
Main features:

Call / E-mail for pricing + Shipping.

- Easily replaceable electrode group
- Can be used in wells with diameters starting from 40 mm
- Reel with high-voltage slip ring

Pulse is a borehole sparker, developed for generating compressional P-wave energy in water-filled wells. This type of source is typically used for crosshole seismic testing (CST) and vertical seismic profiling (VSP) acquisitions. In combination with [Jack energy source](#) it provides stable signal shape with high frequency energy spectrum.

Borehole sparker Pulse





**2 years Warranty speaks
volumes on quality of
equipment**

New LOKALIT-MT Distributed Seismic System
(several 6 channel telemetry units can be linked
up to 1024 Channels in total) **...expandable to
1024 Channels**

Detailed Product description and User manual

<https://www.youtube.com/watch?v=7Sc-d4Ddmwk&t=2s>

<http://geotechru.com/multichannel-seismograph-lakkolit-mt/>

Specifications

Each telemetry unit includes a six-channel registration unit and a six-channel seismic cable with geophones.

Using the Lakolit-MT, a specialist can create and build a surveying system, including 3D data collection.

A laptop/control unit is used to control the seismographs.

Call / Email
for pricing
+ Shipping.

SEISMIC SYSTEMS



New DOLANG WIRELESS SEISMOGRAPH 24 Channels.....expandable to 256 Channels

Call / E-mail for pricing

+ Shipping.

Detailed Product description and User manual
<https://www.geotools.com.au/product/wireless-seismograph-for-refraction-masw-engineering-and-environmental/>

<https://www.youtube.com/watch?v=9oZ3dF2EPmc&t=6s>

Specifications

- Brand new, currently 24 channels but can be expanded to 256 channels over time.
- 4.5Hz frequency geophones receiver units for typical Engineering / Environmental applications including Refraction and MASW

Think BIG, from the start

Grow! Don't get stuck in Small Jobs!

Expandable to 256 channels max





New DOLANG 24 Channels Telemetry SEISMIC SYSTEM (JEA247E500)

US\$ 16,810
+ Shipping.

expandable to 240 or 1000 Channels

Detailed Product description and User manual

<https://www.geotools.com.au/product/4b-dolang-telemetry-cable-connected-seismic-systems-up-to-1000-channels/>

http://www.dolang-geophysical.com/1/upload/jea247esac_manual_eng.pdf
Specifications

Brand new, full telemetry system currently 24 channels but can be expanded to 256 or 1000 channels over time.

- 4.5Hz/ 10Hz frequency geophones receiver units for typical Engineering / Environmental applications including Refraction and MASW

Think BIG, from the start

**Grow! Don't get stuck in Small Jobs!
Start with 24 channels....expand to 240 or 1000 channels**



SEISMIC QUALITY CONTROL

Geophone and Hydrophone Tester

Used SeismicSource™ BIRD DOG-3 GEOPHONE AND HYDROPHONE TESTER

Complete with all accessories + 3-COMPONENT
(3C) RECORDER

Product description and manual:

<http://seismicsource.com/html/products/quality-control/birddog3-3>

Condition and Specifications

32-Bit system is used for quality control in the seismic data acquisition industry to:

Testing FUNCTIONALITY and Calibration of:

- Land Geophones (single) and Geophone streamers including 3C geophones
- Borehole geophone streamers and 3C Components.
- Hydrophones and streamers both marine, borehole
- This 3 Channel recorder included can be used as 3C seismic recording system.

BIRD DOG-3
Complete with accessories
Geophone & Hydrophone tester and software
US\$ 4,400
+ Shipping.

3C Seismic Recorder only:
US\$ 1,150
+ Shipping.

GPS Only:
US\$ 480
+ Shipping.



SEISMIC QUALITY CONTROL

Geophone and Hydrophone Tester

Used Accessories to **Seismic Source BIRD DOG-3 GEOPHONE AND HYDROPHONE TESTER**

Product inspection:

<http://seismicsource.com/html/products/quality-control/birddog3-3>

Condition and Specifications

This is a continuation of listing above.

Presents accessories available and useable with the Bird Dog-3 Seismic Source Geophone and Hydrophone testing system.

Accessories

- **HYDROPHONE TEST TUBE:** Check functionality and calibration of Hydrophones and streamers both marine, borehole
- **3-COMPONENT SEISMIC RECORDER:** can be used as 3C seismic recording system.
- **GPS RECEIVER:** can be used to Seismic source DAQLINK Products and with BIRDDOG-3.
- **SOFTWARE** for operating BIRDDOG-3.

BIRD DOG-3
Complete with accessories
Geophone & Hydrophone tester and software
US\$ 4,400
+ Shipping.

3C Seismic Recorder only:
US\$ 1,150
+ Shipping.

GPS Only:
US\$ 480
+ Shipping.





New LOKALIT-MT Distributed Seismic System
 (several 6 channel telemetry units can be linked
 up to 1024 Channels in total) **...expandable to
 1024 Channels**

Call / Email
 for pricing
 + Shipping.

Detailed Product description and User manual

<https://www.youtube.com/watch?v=7Sc-d4Ddmwk&t=2s>

<http://geotechru.com/multichannel-seismograph-lakkolit-mt/>

Specifications

Each telemetry unit includes a six-channel registration unit and a six-channel seismic cable with geophones. Using the Lakolit-MT, a specialist can create and build a surveying system, including 3D data collection. A laptop/control unit is used to control the seismographs.

**2 year Guarantee speaks volumes on
 quality of equipment**

VERTICAL SEISMIC PROFILING (VSP)

3-Component downhole geophone

<https://geodevice.co/main/seismic/station/telssvsp/>

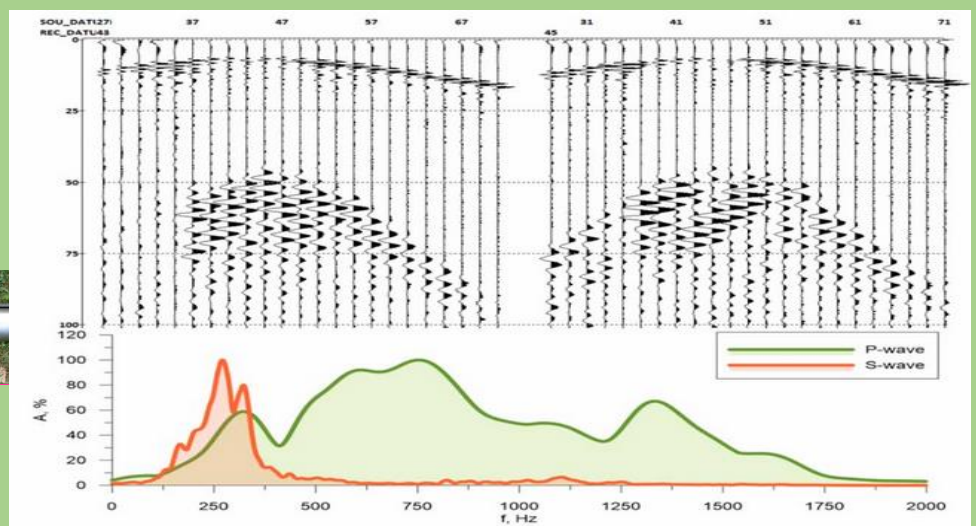
Call / E-mail
 for pricing
 + Shipping.

New GEODEVICE VSP TELEMETRY DOWNHOLE SEISMIC SYSTEM

TELSS-VSP telemetry borehole seismic acquisition system is designed for VSP, polarization VSP, uphole and crosshole surveying.

The mobility of the system allows the use of it in boreholes as deep as 100 meters (and even more).

The presence of 3-component sensor and anchoring arm allows to register full wavefield, including primary, secondary, and other waves.



Concrete Scanning GPR (Damage minimisation/ Structural Defect Assessments)

**Used MALA CX11 CONCRETE SCANNING
Ground Penetrating Radar (GPR)**

US\$ 7,900
+ Shipping.

Condition

- Used, Fully functional, accurate and consistent data.
- Do 2d/ 3d structural defect assessment surveys
- Complete with software
- Signs of cosmetic wear / scratches typical of fieldwork equipment.
- Choice of two antennas 1.6GHz or 2.3GHz.

**US\$ 2850 for
second 2.3GHz
antenna.**



**Need to Scan
DEEP FOOTINGS?**



www.sigeoconcrete.com.au

**Used MALA CX12 CONCRETE SCANNING
Ground Penetrating Radar (GPR)**

**US\$ 8,500
+ Shipping.**

Condition

- Used, Complete and fully functional.
- Do 2d/ 3d structural defect assessment surveys
- Complete with software
- Signs of cosmetic wear / scratches typical of fieldwork equipment.
- Choice of two antennas 1.6GHz or 2.3GHz.

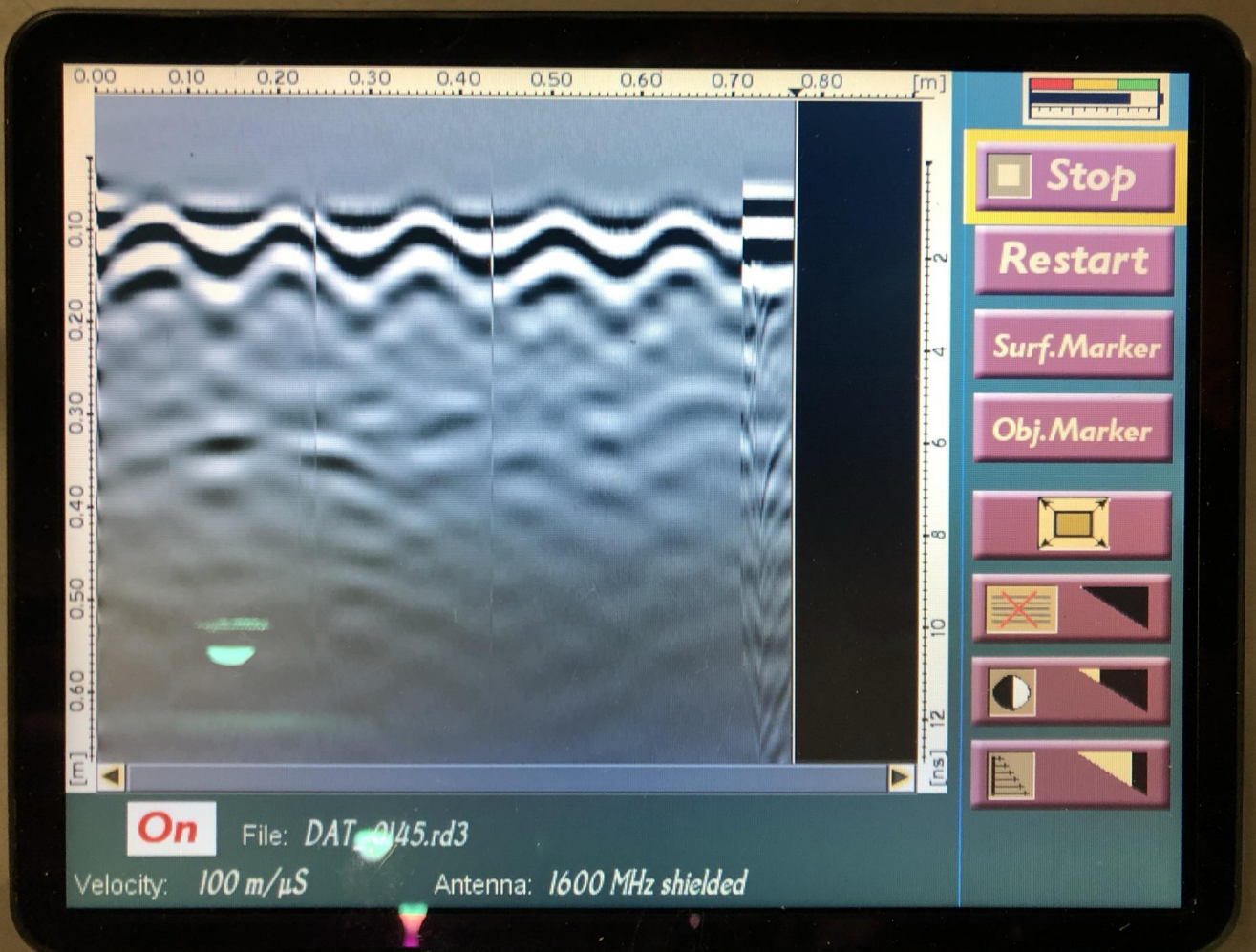
**US\$ 2850 for
second 2.3GHz
antenna.**



Sold (not available)

With EM To detect Power Cables in slab

Want the cleanest data? Mala GPR is Beautiful! If you set it right.





MALÅ

Table 12.1. Approximate depth ranges for different antenna frequencies.

Antenna frequency (GHz)	Approximate Radial Resolution @,c=100 [m/μs] , λ/4 [cm]	Approximate max penetration depth (cm)
1.2	2.1	100
1.6	1.6	50
2.3	1.3	40



* In normal geological/construction environment absent of materials with low resistivity.

The HF antennas are one-piece radar antennas where the antenna elements are contained in a small handheld, shielded box, which in turn can be mounted on a wheel carriage, the HF cart. See Fig 12.1 to 12.3.

With EM option
To detect Power Cables in slab



Figure 12.1 The HF antenna without the wheel carriage (1.6 GHz or 1.2 GHz with the EM option).

**Used GSSI STRUCTURAL MINI XT
CONCRETE SCANNING Ground Penetrating
Radar (GPR)**

US\$ 14,200
+ Shipping.

Condition

- Used, Complete and fully functional.
- Do 2d/ 3d structural defect assessment surveys
- With Palm antenna to allow access into tight spaces
- Signs of cosmetic wear / scratches typical of fieldwork equipment.
- LineTrac not included

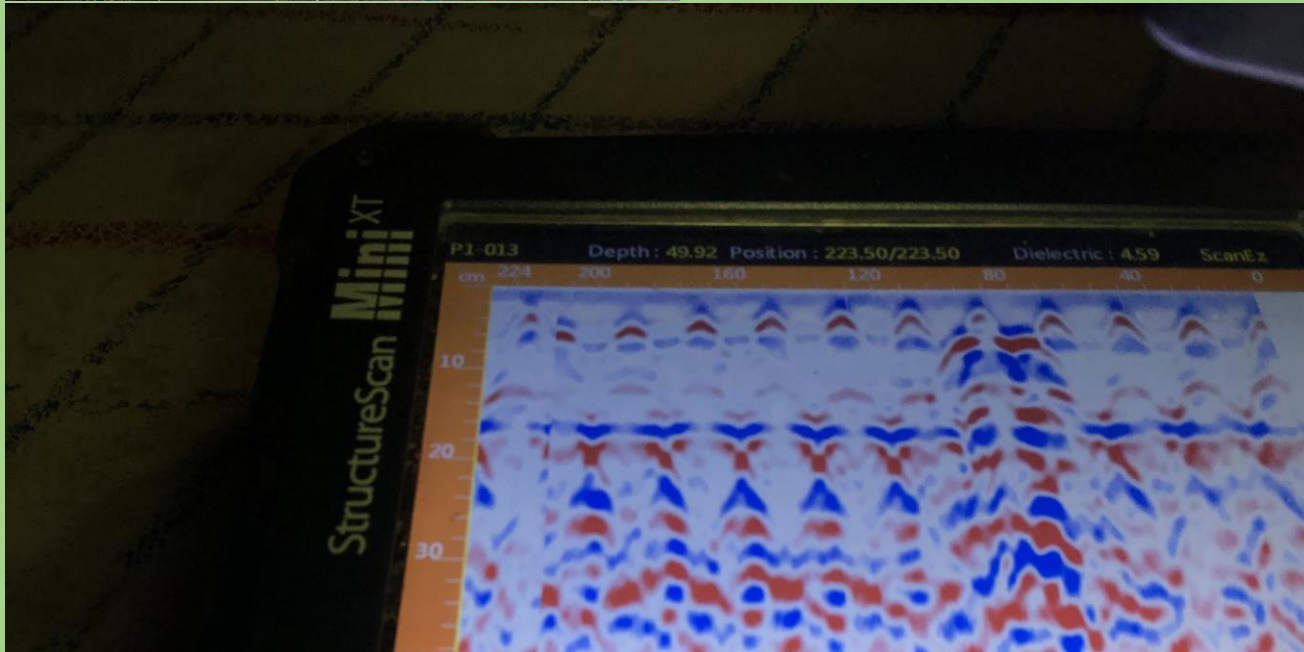


With Palm Antenna
LineTrac not included

**Make More \$\$ Scanning
Concrete Structures**

Endless applications

- Concrete Slabs and Structures
- Beams, Columns, Footings
- Bridge-deck inspection and Assessments
- Pre-cast Concrete QA/QC,
- As-Built Structural Assessments
- Locating Slab-embedded Utility Services





**Used GSSI STRUCTURAL MINI XT
CONCRETE SCANNING Ground Penetrating
Radar (GPR)**

US\$ 12,900
+ Shipping.

Condition

- Used, Complete and fully functional.
- Do 2d/ 3d structural defect assessment surveys
- 3 batteries, Charger and original GSSI transport case
- Signs of cosmetic wear / scratches typical of fieldwork equipment.
- Nor LineTrac, no Palm antenna included



No Palm Antenna no linetrac



**Make More \$\$ Scanning
Concrete Structures**

Endless applications

- Concrete Slabs and Structures
- Beams, Columns, Footings
- Bridge-deck inspection and Assessments
- Pre-cast Concrete QA/QC,
- As-Built Structural Assessments
- Locating Slab-embedded Utility Services



New CONSTRUCTION SCAN 2500 / 1700 2D/3D
GROUND PENETRATING RADAR (GPR)
(Complete)

Call / E-mail
For pricing
+ Shipping.

Detailed inspection

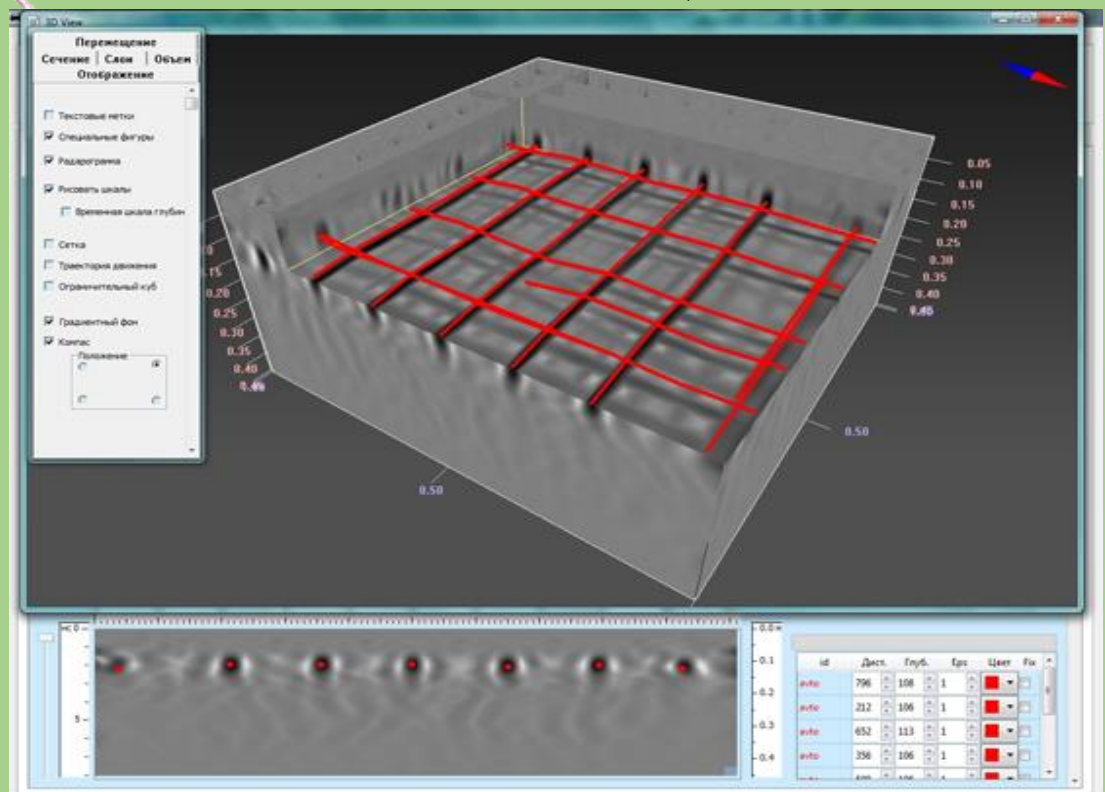
[Construction Scan 1700 3D - YouTube](#)

<https://www.geotools.com.au/product/4a-concrete-structural-scanning-ground-penetrating-radar-gpr/>
<https://www.youtube.com/watch?v=HbAQptFoVnc>

Construction Scan 2500 is a portable all-in one GPR solution designed for automated localizing defects in a wide variety of wood, brick and reinforcement concrete structures, at depth of 0,6 m.

Application

- Detection and location of different defects in reinforced concrete
- Cells, cavities
- Foreign inclusions
- Cracks, layering
- Determination of reinforcement specifications
- Size and Depth
- Degree of corrosion
- Detection of buried wiring, cables and communications lines
- Detection of plastic and metal pipelines
- Detection of heterogeneities, anomalies and other buried in solid environment (which wood, brick, reinforced concrete, building constructions, soil, etc)
- Discovering of ventilation and communication channels
- Detection of shelters and covered-up holes





Used GSSI GROUND PENETRATING RADARS (GPR)
(Complete SIR3000 Controller+ 400MHz Antenna+ 2-wheel cart

US\$ 11,400
+ Shipping.

Condition

- Used, Fully functional, accurate and consistent data.
- 2 new Batteries and 2 batteries at 75% efficiency
- 3 months warranty covering parts and repairs
- slight signs of cosmetic wear typical of fieldwork equipment.

Detailed inspection

<https://www.geotools.com.au/product/gssi-ground-penetrating-radar-gpr/>



Used GSSI GROUND PENETRATING RADARS (GPR)
(Complete SIR3000 Controller+ 270MHz Antenna+ 4wheel cart

US\$ 11,700
+ Shipping.

Condition

- Used, Fully functional, accurate and consistent data.
- 1 new Batteries and 2 batteries at 80% efficiency
- 3 months warranty covering parts and repairs
- slight signs of cosmetic wear typical of fieldwork equipment.

Detailed inspection

<https://www.geotools.com.au/product/gssi-ground-penetrating-radar-gpr/>





Used GSSI 100MHz Frequency GPR ANTENNA (Very good condition)

US\$ 5,900
+ Shipping.

Condition

- Lightly Used, fully functional, very good condition data
- Do deeper investigations for Engineering, Environmental, Geotechnical and Archaeology.
- Signs of cosmetic wear / scratches typical of fieldwork equipment.



SEE DEEPER (2-15 m (5-50 ft))

With Low Frequency 100MHz

The 100 MHz monostatic combines the transmit and receive electronics in a single antenna housing.



Used GSSI 300MHz Frequency GPR ANTENNA (good condition)

US\$ 2,900
+ Shipping.

Condition

- Lightly Used, fully functional, very good condition data
- Do deeper investigations for Engineering, Environmental, Geotechnical and Archaeology.
- Signs of cosmetic wear / scratches typical of fieldwork equipment.

LOCATE DEEPER Than the 400MHz Frequency. 300MHz is the rare, sweet spot (not too high, not too low)



Used GSSI 270 MHz – GPR Shielded Antenna (good condition) (only Antenna nothing else)

US\$ 4,100
+ Shipping.

270 MHz – Shielded Antenna

The 270 MHz antenna is ideally suited for detection and mapping of utility pipes, shallow engineering, environmental applications, and karst investigations. Depth Range: 0-6 m (0-18 ft)





Condition

- Lightly Used, fully functional, very good condition data
- Do deeper investigations for Engineering, Environmental, Geotechnical and Archaeology.
- Signs of cosmetic wear / scratches typical of fieldwork equipment.



LOCATE DEEPER Depth Range: 0-6 m (0-18 ft) Than the 400MHz and 270MHz is the rare sweet spot (not too high, not too low)



Used SENSORS & SOFTWARE LMX100 GROUND PENETRATING RADARS (GPR) Complete with 250MHz Antenna and 4-wheel cart

US\$ + Shipping.

Condition

- Used, Fully functional, accurate and consistent data.
- 1 new Battery and 2 batteries at 80% efficiency
- 3 months warranty covering parts and repairs
- slight signs of cosmetic wear typical of fieldwork equipment.

Sold (not available)



Used MALA EASY LOCATOR GROUND PENETRATING RADARS (GPR) Complete with 500MHz Antenna and 4-wheel cart

US\$ 7,900 + Shipping.

Condition

- Used, Fully functional, accurate and consistent data.
- 1 new Battery and 2 batteries at 80% efficiency
- 3 months warranty covering parts and repairs
- slight signs of cosmetic wear typical of fieldwork equipment.



Used MALA EASY LOCATOR GROUND PENETRATING RADARS (GPR) Complete with 500MHz Antenna and 4-wheel cart

US\$ 7,900 + Shipping.

Condition

- Used, Fully functional, accurate and consistent data.
- 1 new Battery and 2 batteries at 80% efficiency
- 3 months warranty covering parts and repairs
- slight signs of cosmetic wear typical of fieldwork equipment.



Used S DITCH WITCH GROUND PENETRATING RADAR (GPR) Complete with Dual Frequency 250 / 700 MHz Antenna and 4-wheel cart

US\$ 8,900 + Shipping.

Condition

- Used, complete and fully functional.
- Dual frequency 250 / 700 MHz antenna for both shallow and deep locates
- 2 new Batteries
- 3 months warranty covering parts and repairs
- slight signs of cosmetic wear typical of fieldwork equipment. (Repaired crack on red/brown plastic)



2450GR GROUND PENETRATING RADAR SPECIFICATIONS

	U.S.	METRIC		U.S.	METRIC
VEHICLE			DATA RESOLUTION		
Turning path width	18.58 in	500 mm	Antenna technology	Ultra wide band ground coupled, shielded dipole	
Turning diameter	2		Typical range	33 ft 3 in	10.27 m
Maximum axle height	200 mm		Range	30-157 ft	9.14-48 m
Type of antenna frequency	250 and 700 MHz		RECOMMENDED PC SPECIFICATIONS		
Antenna rotation speed			Processor	1 GHz or better	
Resolution	100		RAM	512 MB or more	
Signal collection speed at 2 ft (0.7 m) scanning depth	5.6 mph	9 m/min	Display resolution	800 x 600 or higher	
Display mode	One or multiple panels		Real time	Stack plot or real time	
Scan	18 ft x 6 in		Real time speed	500 MB available	
Display range	Latitude/longitude		External connection	USB 2.0	
Profile length, max	Variable continuous		USB connection	USB 2.0	
Storage data format	Latitude/longitude		Operating system	Windows® 2000 Professional SP4 or Windows® XP Professional	
Output of GPR penetration velocity	Speed data for further data analysis		Operating system (to update connecting data exchange protocol software, etc.)		
Storage of raw penetration data	Software control				
System output	Resolution varies with resolution of antenna system				
Diagnosis	Real time graph display, location panel, 800 x 600				
Dimensions	Height: 45 in; Width: 24 in; Depth: 18 in; Weight: 55 lb				
Weight (maximum)	245 lbs				
Weight (maximum)	245 lbs				
Weight (maximum)	245 lbs				





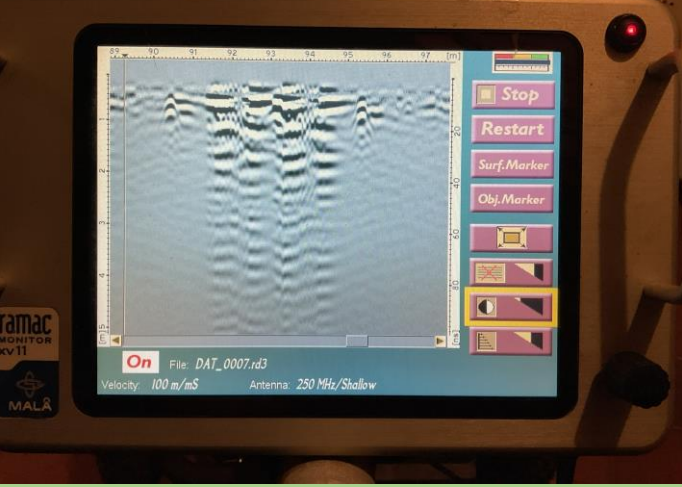
Used MALA RAMAG X3M Ground Penetrating Radar with 250Mhz antenna complete with 4 Wheel Rough Terrain Cart

US\$ 8,800 + Shipping.

Serves all your locating needs. - 250MHz antenna for deep jobs

Items included.

- 21-002492 X3M Ethernet version
- 21-004004A Li-Ion Battery pack 12V
- 21-003006A Battery bag Li-Ion
- 21-002648 Li-Ion Battery Charger 12.6V H01110030 incl EU/UK/
- 21-002486 X3M power cable 4m spiralized
- 21-002488 Ethernet cable 1.8m black
- 19-001050 MALA USB Software and Manuals Package
- 21-003300 Monitor XV11
- 21-002648 Li-Ion Battery Charger 12.6V H01110030 incl EU/UK/
- 21-002485 Monitor power cable, 1.2m straight
- 21-002500 Rough Terrain Cart (RTC) for 250-800MHz



**What's your GPR flavour?
What Frequency (MHz) would you like?
How Deep are your investigations?**



What's your GPR flavour?

What Frequency (MHz) would you like?

How Deep are your investigations?



Or you prefer GSSI?

What Frequency (MHz) would you like?

How Deep are your investigations? , What application?



Want a Pull GPR System (No Cart)?

Used MALA RAMAG X3M Ground Penetrating Radar with 250Mhz antenna

**US\$ 7,400
+ Shipping.**

**Serves all your locating needs.
- 250MHz antenna for deep jobs**

Items included.

- 21-002492 X3M Ethernet version
- 21-004004A Li-Ion Battery pack 12V
- 21-003006A Battery bag Li-Ion
- 21-002648 Li-Ion Battery Charger 12.6V H01110030 incl EU/UK/
- 21-002486 X3M power cable 4m spiralized
- 21-002488 Ethernet cable 1.8m black
- 19-001050 MALA USB Software and Manuals Package
- 21-003300 XV11 Monitor
- 21-002648 Li-Ion Battery Charger 12.6V H01110030 incl EU/UK/
- 21-002485 Monitor power cable, 1.2m straight
- 21-002500 Rough Terrain Cart (RTC) for 250-800MHz

**Fully Functional, Ready to Work
Complete with Software & New Batteries**



Or you prefer GSSI?

What Accessories are you looking for? Frequency (MHz) would you like?



Looking for GSSI Antennas?

What Accessories are you looking for? Frequency (MHz) would you like?



Low Frequency GPR to investigate Deeper?

Frequencies 100MHz, 50 MHz, 25 MHz), Archaeology, Engineering, Environmental, Sinkhole, Ground Subsidence, Shallow Bedrock Profiling etc)





Low Frequency GPR to investigate Deeper?

Frequencies 100MHz, 50 MHz, 25 MHz), Archaeology, Engineering, Environmental, Sinkhole, Ground Subsidence, Shallow Bedrock Profiling etc)



Near-Surface Electromagnetics

Hydrogeology, Engineering and Environmental Geophysics

Equipment / Application



Used GEONICS EM-34 Electromagnetic (EM) Conductivity Mapping System

US\$ 20,400
+ Shipping.

(Fully functional, comes with manufacturer's TEST & CALIBRATION CERTIFICATION 2023)

Condition

Fully functional, had comprehensive Service, testing and Calibration by GEONICS in 2023.

System description

Using the same inductive method as the EM31-MK2, the EM34-3 uses three intercoil spacings - 10, 20 and 40 m - to **provide variable depths of exploration down to 60 metres.** With three intercoil spacings and two dipole modes (horizontal as shown, and vertical) at each spacing, vertical sounding can be obtained. In the vertical dipole (horizontal coplanar) mode, the EM34-3 is very sensitive to vertical geologic anomalies and, as a consequence, is widely used for groundwater exploration in fractured and faulted bedrock.

<http://www.geonics.com/html/em34-3.html>

Geonics EM-34 One tool.... Several Applications

Diversify your business into Groundwater, Environmental, Engineering Geophysics and Agricultural Projects



Near-Surface Electromagnetics

Environmental, Geotechnical, Contaminant Mapping to 6.0m

Equipment / Application



**Used GEONICS EM31-MK2
Electromagnetic (EM) Conductivity
Mapping System**

**US\$ 16,900
+ Shipping.**

**(Fully functional, Complete, IN GOOD
CONDITION , DONE VERY LITTLE WORK**

Description

The effective depth of exploration is about six metres, making it ideal for geotechnical and environmental site characterization. Important advantages of the EM31-MK2 over conventional resistivity methods are the speed with which surveys can be performed, the precision with which small changes in conductivity can be measured and the continuous readout and data collection while traversing the survey area. Additionally, the in-phase component is particularly useful for the detection of buried metallic structure and waste.

<http://www.geonics.com/html/em31-mk2.html>

Geonics EM31-MK2 One tool... Several Applications

**Diversify your business into Environmental, Contaminant Mapping,
Engineering Geophysics and Agricultural Projects**



Electromagnetics EM for Engineering, Groundwater & Environmental 0.5m-to-60m.

New GF Instruments CMD-DUO probe Conductivity mapping systems

Call / E-mail for pricing + Shipping.

for depths 7.5, 15, 30m-to-60m
Applicable to Engineering, Groundwater Agriculture and Environmental

Detailed product description

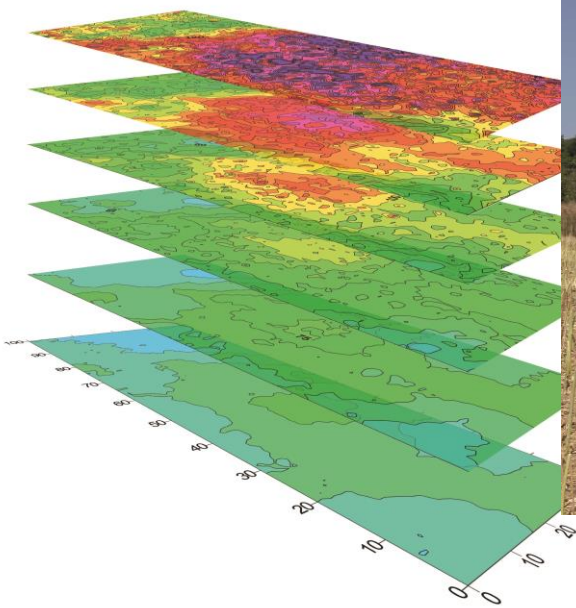
<https://www.geotools.com.au/product/3-shallow-electromagnetic-em-engineering-environmental/>

Specifications

New CMD-DUO: single-depth, two-men operated probe

Variable depth range 15 / 7.5 m or 30 / 15 m or 60 / 30 m for measurement of deeper situated structures (weathered zones, bedrock, cavities).

- Data download via USB or flash disk
- Rechargeable Li-Ion battery lasts for 2-3 working days,
- Lightweight and rugged design



ELECTROMAGNETICS



Used ASTRA-100 Transmitter and MARY-24 EM and Induced Polarisation IP Receiver

Detailed product description

<https://www.geotools.com.au/product/resistivity-induced-polarisation-ip-electromagnetic-em-transmitter-reciever/>

MARY-24

Transmitter "Astra-100" is designed for: Electromagnetics (EM), DC Electrical Resistivity resistivity (ERT), induced polarization (IP) measurements, "IMVP-8" frequency or time domains.

Characteristics

IMVP-8 records signals on 8 potential channels at simultaneously. "IMVP-8" 24-digit ADC's and 2500Hz sample rate

Note: VP100 transmitter sold separately (next page)

Complete EM system for US\$ 15,500 + Shipping.

Or separate component prices below

-ASTRA-100 Transmitter US\$ 8,600 + Shipping.

-MARY-24 EM-Receiver US\$ 7,200 + Shipping.

-8 channels IMVP-8 Receiver US\$ 6,900 + Shipping.

COMPLETE EM SYSTEM READY TO WORK

- Transmitter
- Receiver
- All accessories



Electromagnetics, TDEM, CSEM and Induced polarisation IP



Used ASTRA-100 Transmitter and MARY-24 EM and Induced Polarisation IP Receiver

Complete system for US\$ 15,500 + Shipping.

Detailed product description

<https://www.geotools.com.au/product/resistivity-induced-polarisation-ip-electromagnetic-em-transmitter-reciever/>

Or separate component prices below

[EM-surveying-using-ASTRA-100-transmitter-and-MARY-24-EM-Reciever.pdf \(geotools.com.au\)](#)

-ASTRA-100 Transmitter US\$ 8,600 + Shipping.

Condition and Specifications

Transmitter "Astra-100" is designed for different geophysical methods including DC apparent resistivity measurements, induced polarization measurements, frequency sounding and others. "IMVP-8" is designed for apparent resistivity or induced polarization measurements in frequency or time domains.

-MARY-24 EM-Reciever US\$ 7,200 + Shipping.

Characteristics

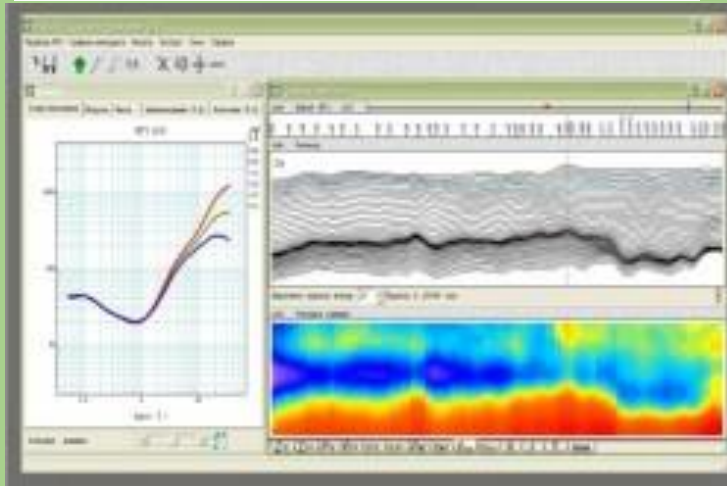
"IMVP-8" receiver allows recording signals on 8 potential channels at once. It has 8 independent ADC's, so it may be applied for using with a wide range of geoelectrical non-conventional arrays, e.g. an array with 8 potential lines sequentially connected to each other.

-8channels IMVP-8 Receiver US\$ 6,900 + Shipping

Advantages

This multi-channel receiver "IMVP-8" decreases prime cost of the research works. 24-digit ADC's and 2500Hz sample rate

VP-1000 Transmitter US\$ 9,200 + Shipping.



Our most recent instrumentation product is an 8-channels receiver "IMVP-8" developed for frequency- and time-domain induced polarization (IP) measurements. It can also be used for all kind of DC techniques as well as for FD CSEM.



[Astra-100](#)



[IMVP-8](#)



[MARY-24](#)

Along with the in-house developed instruments, our company also trades in geophysical instruments produced by other manufacturers. Besides the production of "Phoenix Geophysics Ltd." (Canada) and Iris Instruments (France), we also offer our clients these electromagnetic prospecting instruments and equipment: systems "TEM-FAST" (Russia-Holland) and "Cycle-5" (Russia), generator "VP-1000" (Russia), various electrodes including nonpolarizable,

TDEM, and Induced polarisation IP

Used VP-1000 Transmitter EM and Induced Polarisation IP

VP-1000
Transmitter
US\$ 8,700
+ Shipping.

Detailed product description

<https://www.geotools.com.au/product/resistivity-induced-polarisation-ip-electromagnetic-em-transmitter-reciever/>

[EM-surveying-using-ASTRA-100-transmitter-and-MARY-24-EM-Reciever.pdf](#) (geotools.com.au)

Transmitter Specifications

VP-1000 transmitter is

- 1000Watt peak transmitter,
- Maximum voltage range 50-800V
- Output currents ranging from 0.01Amp to 2.0 Amp
- Duration of output current pulses in RPI-2 mode: 1, 2, 4, 8, 16, 32, 64 s
- Frequencies of output current in RPI-1 mode: 19.6, 9.8, 4.88, 2.44, 1.22, 0.61, 0.3 Hz
- Load resistance range: 25 - 80 kOhms
- Transmitter powered by: the external AC source of 220 V, 50 Hz Generator
- Transmitter weight: 12 Kg.

Output wave form

Transmitter power produces bipolar rectangular current pulses and is capable of operating in two modes:

RPI-1 rectangular current pulses without intervals (AC mode)

RPI-2 rectangular current pulses with intervals, having the same duration as the pulses.



Electromagnetics EM for Engineering, Groundwater & Environmental 0.5m-to-60m.

New GF Instruments CMD-DUO 2men probe
Conductivity mapping systems for depths 7.5, 15,
30m-to-60m applicable to Engineering,
Groundwater Agriculture and Environmental

Call / E-mail
for pricing
+ Shipping.

Detailed product description

<https://www.geotools.com.au/product/3-shallow-electromagnetic-em-engineering-environmental/>

Condition and Specifications

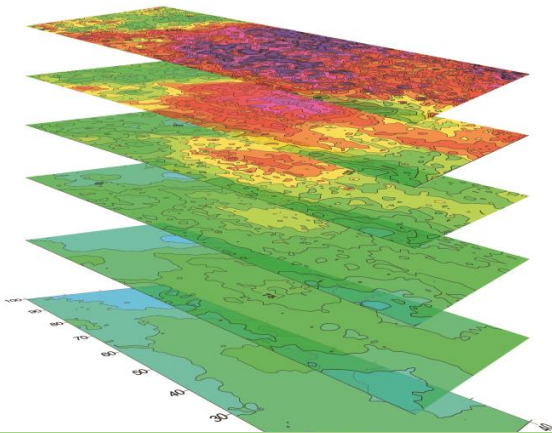
New CMD-DUO: single-depth, two-men operated probe

with variable depth range 15 / 7.5 m or 30 / 15 m
or 60 / 30 m

for measurement of deeper situated structures
(weathered zones, bedrock, cavities).

Data download via USB or flash disk

Rechargeable Li-Ion battery lasts for 2-3 working
days, Lightweight and rugged design



Single Depth or Multi-depth Electromagnetics
EM Conductivity Mapping systems (for
Engineering & Environmental 0.5m-to-60m.

New GF Instruments CMD Electromagnetics (EM)
earth Conductivity mapping systems for depths
0.5m-to-60m applicable to Engineering,
Agriculture and Environmental

Call / E-mail
for pricing
+ Shipping.

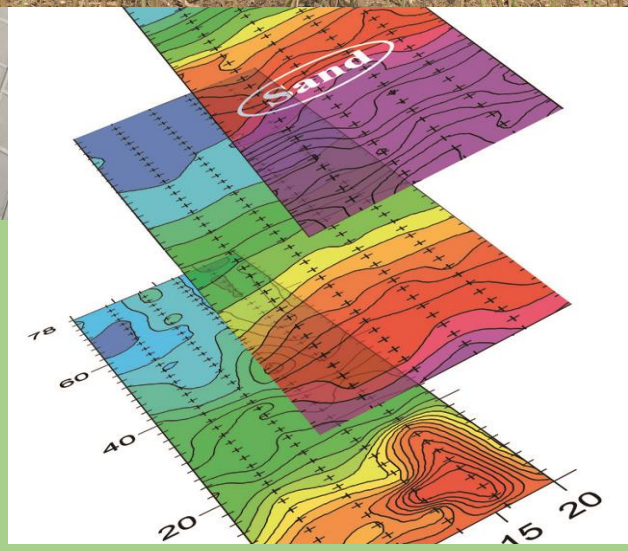
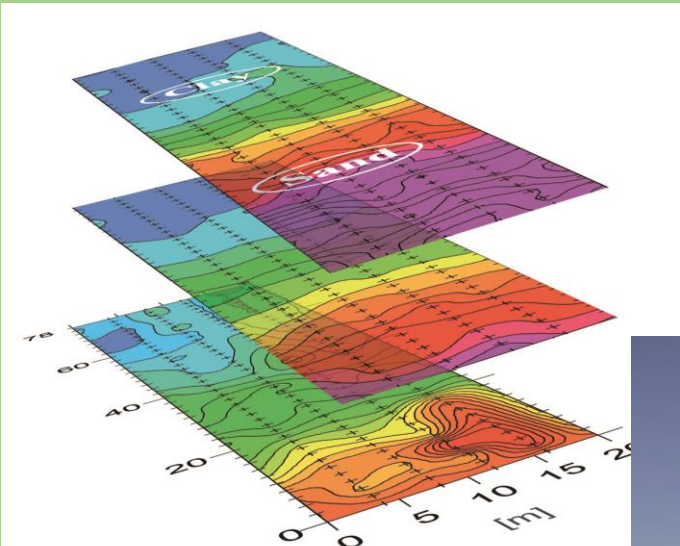


Detailed product description

<https://www.geotools.com.au/product/3-shallow-electromagnetic-em-engineering-environmental/>

Condition and Specifications

- Multi-depth profiling and mapping (0.15 – 6 m),
- Standard or custom-made probes (1 or 3 or 6 receivers)
- Fast sampling (up to 10 Hz), high temperature stability,
- One control unit for all probes (B/W or colour display)
- Simple operation, optional smartphone app
- Manual and continuous measuring modes with GPS,
- Two Bluetooth channels (for probe and external GPS)
- Real-time clock, map preview of area coverage
- Data download via USB or flash disk
- Rechargeable Li-Ion battery lasts for 2-3 working days,
- Lightweight and rugged design



Very Low Frequency (VLF) for Groundwater & Environmental

Have you had some dry / low-yielding boreholes you thought had good fractured zonesbut the fractures were dry or only moist...??

Has your Resistivity let you down?.....



Be smart,before you set-up aimless resistivity profiles and end-up with nothing..... quickly run a VLF system to prioritise your targets, then Resistivity, EM etc.

Used ABEM WADI VLF SYSTEM

US\$ 5900
+ Shipping.

Detailed product description

<https://www.geotools.com.au/product/3-shallow-electromagnetic-em-engineering-environmental/>

ABEM WADI VLF SYSTEM (Used)

Condition

- Used Fully functional, accurate and consistent readings.
- Comes with a 3 months warranty covering parts and repairs.
- has signs of cosmetic wear/scratches typical of fieldwork equipment.
- Complete with carry harness, manuals and software.
- highly effective for groundwater within 65-85m depth which is average depth of most wells.

Types of Geophysical Survey

➤ Very Low Frequency- Electromagnetic (VLF- EM)



The instrument-	ABEM WADI VLF
Working principle-	Very Low Frequency radio waves (15-30 kHz)
Penetration depth-	60 to 80 m

WADI finds structures where useful quantities of underground water may be trapped in rock fractures and cavities, thus enabling drillers to select the most promising sites for their wells.

Magnetotelluric (MT) / CSAMT Deep investigations 1.5Km-to- Several Km depth

New ARMAT-5 Five channel 16/24-bit broad spectrum EM/ CSAMT, CSEM Magnetotelluric (MT) Survey system

Call / E-mail for pricing + Shipping.

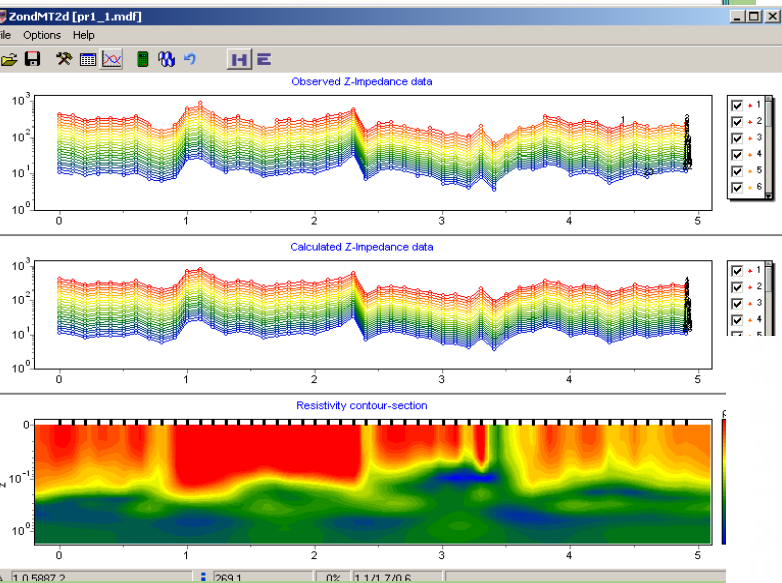
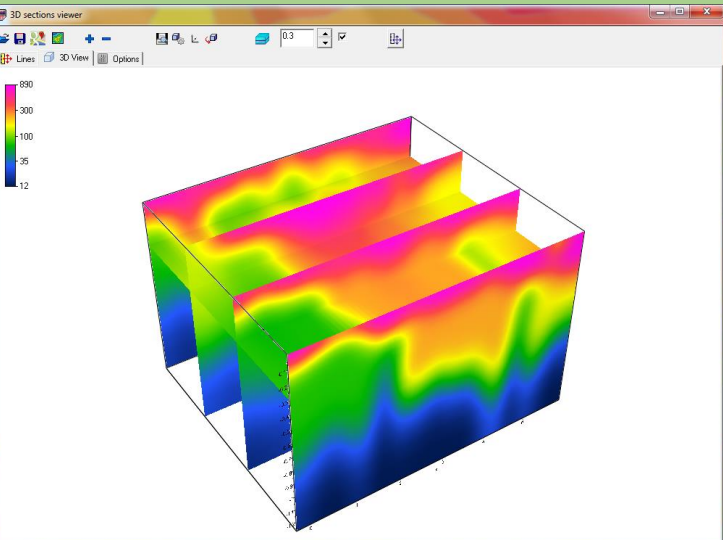
Detailed product description

<https://www.geotools.com.au/product/3-magnetotelluric-mt-amt-csamt/>

Condition and Specifications

ARMAT-5 complex is designed for implementation of a variety of electric survey methods: AMT, CSAMT, CSEM, RMT, CSRMT. Its wide frequency range (0.1 Hz–1 MHz) makes it possible to apply this tool to explore depths from first meters up to several kilometers for wide range of targets.

- Large set of methods
- Frequency bandwidth 0.1 Hz–1 MHz
- 5 channels of registration
- Programmable external amplifiers
- Built-in data processing and visualization
- Automatic calibration



**MAGNETOTELLURIC
(MT/AMT/CSAMT)
Deep Investigations
MTC-50H Magnetic sensor coils antenna**



Sold (not available)

Used Phoenix MTC-50H Magnetic field Sensor coils antenna for MT/AMT/CSAMT Deep Magnetotelluric surveys

US\$
Per Coil antenna
+ Shipping.

Discounted
US\$ for all 4 coils
purchased as lot.

Acquire magnetotelluric data at frequencies up to 400 Hz and down to 0.00002 Hz (50 000 seconds)

Detailed product description

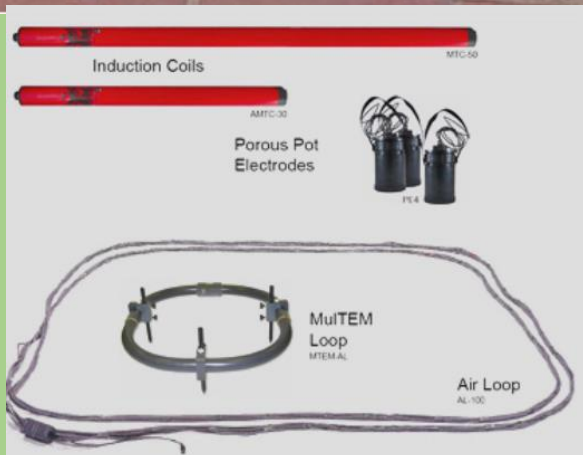
<http://www.phoenix-geophysics.com/products/sensors/>

Compatible with Phoenix systems V5 2000 System or System2000.net instruments

Specifications

MTC-50H magnetic sensor coils weigh approximately 8 kg, and measure only 144 cm. They provide magnetotelluric data at frequencies up to 400 Hz and down to 0.00002 Hz (50 000 seconds). As of 2010, the MTC-50H replaces the older MTC-50 sensor.

MTC-50H response Characteristic



Model MTC-50 (now replaced by MTC-50H, the old one is similar or better)

Overall Length : 144 cm

Outside Diameter : 6.0 cm

Weight : 8.2 kg

Frequency Range (for MT) : Up to 400 Hz, down to 0.00002 Hz



Sold (not available)

LOW-COST RESISTIVITY METERS (Low-transmitter Power / Receiver Sensitivity)

Please note these are relatively lower-cost, low-power earth resistivity meter options, they are based on Wenner and Schlumberger array design as most terrameters and are used for Resistivity profiling and Sounding (VES). They are suitable for Shallow-to-medium geophysical investigation 0-60m (depending on the ground) readings will be accurate and consistent. Applications include: Engineering / Environmental surveys, earthing surveys and simple Groundwater investigations. Deeper than 60m or thick Clay-masked / conductive overburden (such as laterite) or high contact resistance sands, readings may become somewhat unstable, data may get noisy as the transmitter struggles to inject big currents / Receiver design may be noise-saturated.



RL GEO RESISTIVITY METER

(with manual VES / Profiling Cables 150m length)

Condition

- Fully functional, accurate and consistent readings (shallow-medium investigations).
- has slight signs of cosmetic wear typical of fieldwork equipment.
- Has internal battery but can be powered from an external battery.

US\$ 3,100

+ Shipping.



LOW-COST EARTH RESISTIVITY METERS profiling & Sounding VES

(with manual VES / Profiling Cables 150m length)

Detailed inspection

<https://www.geotools.com.au/product/agi-sting-r1-swift-ministing-swift-28-electrode-resistivity-imaging-system-active-switching-cables/>

Condition

- Fully functional, accurate and consistent readings (shallow-medium 0-60m investigations).
- has slight signs of cosmetic wear typical of fieldwork equipment.
- Has internal battery but can be powered from an external battery.

US\$ 3,100

+ Shipping.



Figure 13 The Swift interface box.

Figure 17 The

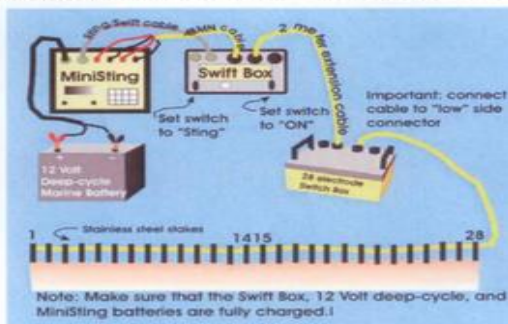


Figure 18 MiniSting/Swift/Switch Box 28

AGI STING SWIFT Switching box

(Do more (2d/3d) with your simple STING R1/ MiniSTING)

Detailed inspection

<https://www.geotools.com.au/product/agi-sting-r1-swift-ministing-swift-28-electrode-resistivity-imaging-system-active-switching-cables/>

Condition

- Used, aged but still functional, accurate and consistent readings.
- No STING-SWIFT connector cables only, nor electrode cables included
- New generic battery replaced, external powering modification
- Signs of cosmetic wear typical of fieldwork equipment.
Can power from an external battery.

US\$ 3,650

+ Shipping.

PILE INTEGRITY TESTING

New IDS-1, IDS-2 PILE INTEGRITY TESTING (Sonic Echo_) to 60m depth (Complete)

Call / E-mail
For pricing
+ Shipping.

Detailed inspection

<https://www.geotools.com.au/product/4a-pile-integrity-testing/>

<https://www.youtube.com/watch?v=i8IC896TTHA>

<https://www.youtube.com/watch?v=Y5j2aUdCaTY>

This instrument "IDS-1" and IDS-2 can determine the length of reinforced concrete piles, Steel and Wooden piles up to sixty meters in length, such piles applicable to deep pile foundation buildings, Dams, Piers, Telecom Communication towers and Marine structures including jetty.

Engineers can also use IDS -1 and IDS-2 for surveying a structures' foundation and examining concrete hydraulic structures, as well as inspecting underground tunnels, sewers, underground storage tanks.

APPLICATIONS

- Determining the length, integrity, average strength, and defects of piles
- Surveying structures foundation
- Examining concrete hydraulic structures
- Inspecting tunnels, sewers, underground storage tanks
- Measuring thickness of foundation slab and detecting cavities under them
- Examining condition and strength of concrete structure.

PILE TESTING DEVICE IDS-1



For inspection piles
and foundations



New equipment

GEOTOOLS AUSTRALIA PTY LTD supplies a wide range of new geophysical equipment (New & Used) including: Time Domain EM, Magnetometers, Gradiometer-Magnetometers, Electrical Resistivity Tomography (ERT), Seismics, Marine seismics, Magnetotelluric, Ground Penetrating, Concrete NDT systems etc.

You can explore the range by clicking on link below and navigate the categories.

<https://www.geotools.com.au/>

<https://www.geotools.com.au/new-equipment/> and navigate the categories.

<https://www.geotools.com.au/new-equipment/> → New Equipment → Explore the categories.

The screenshot shows the GeoTools website interface. The navigation menu includes 'Home', 'About Us', 'New Equipment', 'Used Equipment', 'Hire', and 'Contact'. The 'New Equipment' menu is highlighted with a red box and a red arrow. Below the menu, a list of equipment categories is displayed, also highlighted with a red box and a red arrow. The categories include:

- Electromagnetic EM Time Domain Electromagnetic TDEM
- Electromagnetics EM and MT AMT CSAMT
- Magnetotelluric MT2D
- Processing and inversionSoftware
- Select a category

The main content area displays several equipment items with images and descriptions:

- 1 ABEM TERRAMETER 1000 ELECTRICAL RESISTIVITY TOMOGRAPHY
- 1- ELECTRICAL RESISTIVITY TOMOGRAPHY 2/3D ERT AND VES
- 1- ELECTRICAL RESISTIVITY TOMOGRAPHY 2D/3D AND VES-GEOTECH
- 1- ELECTROMAGNETIC EM AND ELECTRICAL RESISTIVITY SOUNDING VES
- 1- SUPERSTING R8/IP 56 ELECTRODE ELECTRIC RESISTIVITY

Each item has a 'Read more' and 'Show Details' button. Below the equipment list, there are several smaller images and graphs, including a 'Natural Gradient Diagram' and a person using geophysical equipment in the field.

Please note: In the event of expressing interest, the above catalogue should not be considered a proforma invoice, we recommend that you contact us first to confirm availability, price and details of terms and condition. Upon request, a formal quotation shall be raised.

Besides equipment supply, we enjoy discussing geophysical challenges including surveys and data processing. Looking forward to serving you.

Regards

Paul Ssali
Senior Geophysicist (MSc)
GEOTOOLS AUSTRALIA



Email: admin@geotools.com.au www.geotools.com.au